



Local action groups in Slovenia

in the programming period 2014–2020



PROGRAM
RAZVOJA
PODEŽELJA



EVROPSKA UNIJA
EVROPSKI SKLAD ZA
REGIONALNI RAZVOJ
NALOŽBA V VAŠO PRIHODNOST



EVROPSKI STRUKTURNI IN INVESTICIJSKI SKLADI

New jobs

37 LOCAL ACTION
GROUPS

Economic
development
of rural areas

Contents

CLLD/LEADER 3

Map of LAG 5

National Rural Network 80

CLLD/LEADER INFO point 80

Social
inclusion

LEADING FUND:
28 EAFRD
8 ERDF
1 EMFF

EUR 97 MILLION
EAFRD EUR 53 MILLION
ERDF EUR 37.5 MILLION
EMFF EUR 6.5 MILLION

Fight against
poverty

CLLD/LEADER

The CLLD/LEADER approach is a tool to promote joint local development according to the 'bottom-up' approach. The bottom-up approach enables local residents to participate actively in decision-making regarding the priorities and development objectives of the local area, including financial resources, to attain the objectives of the local area by forming local partnerships of so-called local action groups (hereinafter: LAGs).

In the programming period 2014–2020, the CLLD/LEADER approach has been taken in Slovenia as part of the joint instrument Community-Led Local Development (hereinafter: CLLD) within which the funds of the European Regional Development Fund (hereinafter: ERDF) and the European Maritime and Fisheries Fund (hereinafter: EMFF) are available to LAGs in addition to the funds of the European Agricultural Fund for Rural Development (hereinafter: EAFRD). In the programming period 2014–2020, a total of EUR 97 million has been allocated to implementing CLLD/LEADER: EUR 53 million from the EAFRD, EUR 37.5 million from the ERDF and EUR 6.5 million from the EMFF. Through the CLLD/LEADER approach, a combination of different financial resources enables LAGs to implement integrated and complex operations which are not strictly limited to rural areas only, but also include small urban, fishing and aquaculture areas. Individual LAGs were formed in areas with common local needs and challenges with the common objective of realising local development needs and attaining the objectives of local development strategies (hereinafter: LDSs).

The CLLD/LEADER approach facilitates the realisation of a wide array of challenges in different environments and greater flexibility in attaining the objectives, and corresponds to the actual needs of local areas.

Such an approach is much more integrated, and supports the successful realisation of local needs. Access to financial resources from various funds enables local partnerships to expand their field of application and dedicate more attention to fields and issues which they would otherwise find more difficult to discuss.

The objective of the CLLD/LEADER approach is to promote social inclusion, create and maintain jobs, fight poverty and any other discrimination and reduce regional development disparities, and develop local economies. Another objective is to contribute to nature conservation, and the protection of the environment, cultural landscape, cultural heritage and its features.

Support from the EAFRD is focused on the fifth action area from the Rural Development Programme for the period 2014–2020, which reads: "Green jobs, and the coherent and sustainable development of rural areas, based on the development of the endogenous potential of the rural environment."

Support from the ERDF is focused on the fifth investment priority within the ninth priority axis of the Operational Programme for the Implementation of the EU Cohesion Policy in the Period 2014–2020, which reads: "Investments under CLLD strategies". Within this priority axis, measures are foreseen which will be carried out within the scope of three areas of action, i.e. the creation of jobs, environmental protection and nature conservation, and greater inclusion of vulnerable groups. ERDF funds are allocated to resolve urban issues in small urban areas and in problem areas to which additional funds were allocated.

Support from the EMFF focuses on attaining special objectives of the promotion of economic growth, social inclusion, the creation of new jobs and support for employment and labour mobility in coastal and inland communities which rely on fishing and aquaculture, including the diversification of activities in fisheries and other sectors of the maritime economy within the fourth Union priority, which reads: "Increasing employment and territorial cohesion".

The CLLD/LEADER approach is carried out through four sub-measures:

- Preparatory support;
- Support for implementing operations under the community-led local development strategy;
- Preparation and implementation of cooperation activities of the local action group;
- Support for running costs and animation.

The 'Preparation and implementation of cooperation activities of the local action group' sub-measure particularly promotes cooperation between partnerships within the scope of community-led local development, which is especially important for exchanging and transferring examples of best practice, and for speeding up successful project ideas.

The purpose of the sub-measure is to co-finance eligible costs incurred during the preparation and implementation of individual cooperation activities of LAGs either within a Member State (interregional cooperation) or with regions in different Member States or with regions of third countries (transnational cooperation).

The sub-measure is intended to resolve specific local problems, transfer examples of best practice between LAGs, and to seek connections and new knowledge. Cooperation projects contribute to the objectives of operational programmes of all three funds included in the implementation of the CLLD/LEADER approach, which put special emphasis on the merger of LAGs with common interests, which generates new ideas and develops new approaches.

LOCAL ACTION GROUPS IN THE PROGRAMMING PERIOD 2014–2020

In the programming period 2014–2020, 37 local action groups were formed in Slovenia, thus covering the whole territory. Local action groups were formed in areas with common local needs and challenges with the common objective of realising local development needs and attaining the objectives in LDSs. These areas must be combined into a homogeneous geographic and functional whole and the area of an individual municipality must not be divided between several LAGs.



Map of LAG

- 1 LAG Between Snežnik and Nanos
- 2 LAG From Pohorje to Bohor
- 3 LAG For city, countryside and you
- 4 LAG Swallow
- 5 LAG Meža Valley
- 6 LAG Loka's Mountains
- 7 LAG The Heart of Slovenia
- 8 LAG Haloze
- 9 LAG Posavje
- 10 LAG The Diversity of the Countryside
- 11 LAG Soča Valley
- 12 LAG Suha krajina, Temenica and Krka
- 13 LAG Goričko 2020
- 14 LAG Obsotelje and Kozjansko
- 15 LAG With the kind people 2020
- 16 LAG Good for us
- 17 LAG Mislinja and Drava Valley
- 18 LAG Dolenjska and Bela krajina
- 19 LAG of Upper Savinja and Šalek Valley
- 20 LAG For Community-Initiative-Lineage
- 21 LAG Notranjska
- 22 LAG Gorenjska košarica
- 23 LAG Ovtar Slovenske gorice
- 24 LAG Zasavje Partnership
- 25 LAG Administrative Unit Ormož
- 26 TOTI LAG
- 27 LAG Lower Savinja Valley
- 28 LAG Embraced by the Sun
- 29 LAG Richness of rural areas
- 30 LAG Prlekija
- 31 LAG Heritage Trails from Turjak to Kolpa
- 32 LAG Istre
- 33 LAG Barje with hinterland
- 34 LAG Drava
- 35 LAG The Capital and countryside – hand in hand
- 36 LAG Karst and Brkini
- 37 LAG Vipava Valley





1 LAG Between Snežnik and Nanos

(Slovenian: LAS Med Snežnikom in Nanosom)



📍 LAS Med Snežnikom in Nanosom

Bazoviška 14
6250 Ilirska Bistrica

☎ +386 (0)31 339 789
+ 386 (0)5 711 23 35



🤝 Lead partner of the LAG:
Društvo za razvoj podeželja med Snežnikom in Nanosom



VIDEO
▼

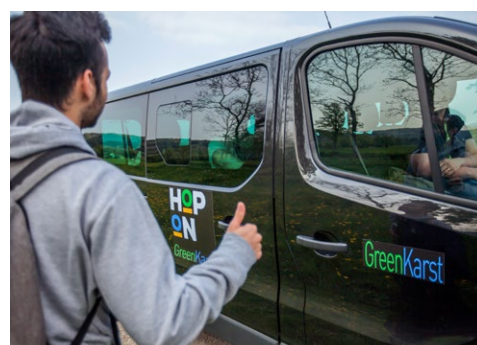


TABLE OF CONTENTS >

MAP >

This LAG comprises the municipalities of Ilirska Bistrica, Pivka and Postojna. LAG Between Snežnik and Nanos is worth a visit for its good projects, extraordinary hospitality and good organisation. The lead partner of the LAG is the Society for Development of Rural Areas Between Snežnik and Nanos, which is active in the organisation of farmers' markets, various events related to rural development, and examining of best practices in, and outside of, the country.

The members of the Society are private undertakings, farms, societies, organisations, institutes and companies. The members of the LAG warmly welcome you to: the Park of Military History in Pivka, the Ecomuseum of the Seasonal Lakes of Pivka in Slovenska vas near Pivka, the Museum of Škoromati in Podgrad, Prem Castle and the following farms: Pri Andrejevih in Narin, Hudičevcevec in Razdrto, Valentina Malečkar below Prem, Biščak Fruit Farm, Kozlek Organic Farm in Ilirska Bistrica, Na meji Tourist Farm in Trnje, the Smrekar Homestead in Grobišče and many others.

The PUDGURA Tourist Society welcomes you to a renovated double hayrack, which constitutes a museum exhibit; you may also visit Brkini on a ridge road and the Brkini Fruit Road, where you can try various fruit treats sold by farmers. Fishermen are also members of the LAG; they greet visitors by the numerous lakes and watercourses in the area of the LAG, which has an abundance of water despite being a karst area. Farms and companies engaged in horse riding (Prestranek Castle, Trnje B&B, etc.). Hiking is also well-developed in this area, as the LAG boasts four peaks worth a visit: Nanos, Vremščica, Kozlek and Snežnik. The Milanja Trail should also be mentioned; it runs along the south-eastern edges of Snežnik, and starts and ends in Črne njive above Ilirska Bistrica.

*Funded by: EAFRD and ERDF
Leading fund: EAFRD*

Objectives of the LDS:

- To promote connections between development partners.
- To promote the orientation of actors towards development (innovation).
- To promote entrepreneurial activities in rural areas.
- To improve or conserve the natural environment in a good state and promote measures to adapt to climate change.
- To enhance social integration and the social inclusion of all population groups.
- To improve conditions to facilitate a high quality of life.
- To speed up the development of social entrepreneurship.

Projects of the LAG:

RIDING HOLIDAYS WITH YOUR OWN HORSE

Partners from two municipalities, i.e. Pivka and Ilirska Bistrica, have merged to form and implement a new tourist product "holidays with your own horse".

The activities carried out within the operation may be roughly summarised in three sets:

- Exterior design of Volk Farm: with a rest area in the forest and two locations for socialising and relaxing by the existing riding hall, to implement a new tourist product.
- Establishing a website and designing promotional materials: Overall design, shirts and jackets (uniform image of staff/guides), promotional video and photos.
- Promotion of the tourist product: Facebook page (<https://www.facebook.com/pg/jahalnepocitnice/posts/>), publications on the website (<https://jahalnepocitnice.si/>) on Facebook.

The joint activities of both partners in designing the product were: determining riding paths, agreements with providers, providing extras on horses (a group of five riders) for photography and video recording, promotion in the social network.

Fund: EAFRD

Status of the project: completed.

PRESERVING THE HERITAGE OF CART DRIVING ALONG THE VIENNA–TRIESTE IMPERIAL ROAD WITH AN EMPHASIS ON THE AREA OF THE MUNICIPALITY OF POSTOJNA

The operation includes the production of two documentaries about cart driving and related activities. Cart driving was one of the most important activities undertaken by residents along the old Vienna–Trieste imperial road, which contributed to the development of other activities, such as the wood industry, hospitality, etc.

The implementation of the operation facilitates the documentation of cultural heritage in the region and includes the municipalities of Postojna, Pivka and Ilirska Bistrica. The documentation process is based on existing and available documents, and the testimony of living residents.

The project is in progress; the first phase included the production of the first film, entitled The Heritage of Cart Driving (<https://youtu.be/3H6v57n7578>), which premiered on 22 May 2018 in Postojna with reruns on 23 May 2018 in Postojna, 24 May in Ilirska Bistrica and 25 May 2018 in Pivka.

Fund: EAFRD

Status of the project: completed.

HOP ON–HOP OFF TRANSPORT

The HOP ON operation (YouTube: <https://www.youtube.com/watch?v=vZnxmc-CYTXs>) provides an innovative business model of tourist transport. The service is a combination of the transport of tourists, adapted local guidance and sightseeing, and connections between tourist spots in the area of LAG Between Snežnik and Nanos.

Since this is a rural area with poor public passenger transport connections, tourists face problems accessing the lesser known places here.

The operation will establish networks and partnerships; it will connect tourist sights (the Park of Military History, the Karst Living Museum, Prem Castle, old town centres, etc.), providers of typical tourist products, local guides and accommodation providers in the whole area. Transport will also facilitate bike transport.

The HOP ON service and the business model are the bases for the further development of a common tourist product – the regional experience card of the Green Karst.

Fund: EAFRD

Status of the project: completed.



2 LAG From Pohorje to Bohor

(Slovenian: LAS Od Pohorja do Bohorja)

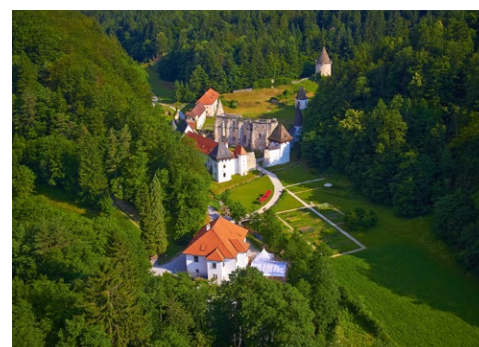
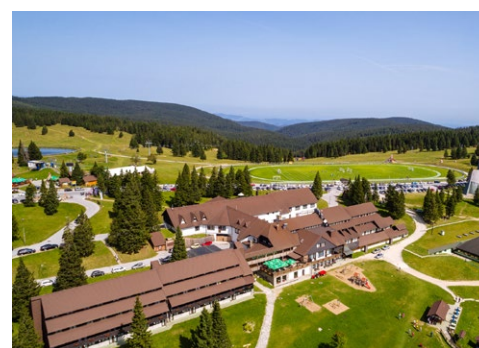


LAS »Od Pohorja do Bohorja«
Ulica skladateljev Ipavcev 17
3230 Šentjur

+386 (0)3 747 13 02



Lead partner of the LAG:
Razvojna agencija Kozjansko



[TABLE OF CONTENTS >](#)

[MAP >](#)

LAG From Pohorje to Bohor merges the areas of the municipalities of Dobje, Dobrna, Oplotnica, Slovenske Konjice, Šentjur, Vitanje and Zreče, and boasts rich natural and cultural heritage. It supports and promotes local development, better recognisability of the area, better cooperation with others, with the common objective of contributing to the sustainable development of the area under the slogan 'We are Building Future with Tradition'.

The area comprises an abundant set of unique tourist products, and a rich selection of healthy, homemade and traditional products.

Dobrna is located in the heart of green forests below Paški Kozjak and is extraordinary due to its healthy water, which was known by the Celts and Romans. The Dobrna spa was first mentioned in 1403; it is the oldest operating Slovenian thermal spa. Vitanje lies not far from Dobrna, and takes pride in the increasingly famous Herman Potočnik Noordung. The Cultural Centre of European Space Technologies (KSEVT) is located in the centre of Vitanje.

Oplotnica boasts hidden natural treasures, including the unique tonalite from Pohorje. The only site of green granite in the world, also called cizlakite, is located nearby. The well-maintained Žiče Manor also calls for a visit.

Slovenske Konjice is a town full of noble stories, where walks through Stari trg and Mestni trg are the most wonderful experiences. The Žiče Charterhouse is a cultural-monument of national importance. The building of the current Gastuž, one of the oldest operating restaurants in Central Europe, was built in the 15th century.

Zreče is known as a wellness area with a sports centre, the Rogla climatic health resort and Terme Zreče Spa.

Šentjur is a municipality with a rich cultural heritage; the Ipavec composers and Anton Martin Slomšek hail from here. Settlement has a very long history, which you can see in the Rifnik Archaeological Park. You may relax by Lake Slivnica.

The smallest municipality in the area of this LAG is Dobje which, however, is a true gem in the heart of Kozjansko. You can enjoy pristine nature and have a genuine Kozjansko experience at the Kozjansko Homestead.

Funded by: EAFRD and ERDF
Leading fund: EAFRD

Objectives of the LDS:

- Suitable infrastructure for living and working.
- Maintained and created jobs.
- To preserve biodiversity and protect valuable natural features;
- To improve the conditions for the better inclusion of recognised vulnerable groups.

Projects of the LAG:

OFF ON THE POHORJE-BOHOR TOUR – INNOVATIVE INTEGRAL DESTINATION PRODUCT

In the area between Pohorje and Bohor, joint activities are carried out with the objective of combining tourist products and services of the municipalities.

The theme that most explicitly connects them is common themed trails, where visitors may actively experience natural and cultural heritage, and common cuisine. However, they have been facing the problem of the unused potential of themed trails.

The purpose of the project is to merge the potential of the whole area into a common uniform network, to train stakeholders, to develop innovative integral destination products and test three new innovative products as circular study tours with various target groups, preparing them to become sustainable products of the whole area between Pohorje and Bohor.

Fund: EAFRD

Status of the project: in progress.

INTERGENERATIONAL EXERCISE PARK

The first phase of a modern outdoor exercise centre will be set up in a park in Zreče, which will include tools for promoting healthy and safe exercise, the development of motor skills and fun, while exercising outdoors in various target groups.

Innovative approaches will stimulate users to exercise more in a natural, safe and guided way to acquire skills which they think they cannot acquire.

Fund: ERDF

Status of the project: in progress.

ADVENTURE PLAYGROUND WITH A SANITARY UNIT FOR THE DISABLED

The project in Ramna by Lake Slivnica encompasses the establishment of an adventure playground for children, young people and women, and other vulnerable groups. An additional sanitary unit for the disabled will constitute an essential sanitary facility for disabled visitors, which will expand the development of basic services in this increasingly popular area in the Municipality of Šentjur.

Fund: EAFRD

Status of the project: in progress.

3 LAG For city, countryside and you (Slovenian: LAS Za mesto in vas)



LAS Za mesto in vas
Tehnološki park 19
1000 Ljubljana

+ 386 (0)1 306 19 02



Lead partner of the LAG:
**Regionalna razvojna agencija
Ljubljanske urbane regije**



LAG For city, countryside and you is one of the most developed areas in Slovenia with a long economic tradition in the fields of crafts and entrepreneurship. Regardless of the dense settlement and predominantly urban character of the area, nature is well preserved and comprises various well-maintained habitats and many valuable natural features. The area is also home to 749 cultural heritage units, of which 102 are cultural heritage monuments.

This LAG comprises the municipalities of Domžale, Komenda, Medvode, Mengeš, Trzin and Vodice.

Komenda is home to the Church of St Peter (1147) and a cemetery with a famous cross. There are 700-year-old linden trees beside the church. The streams in the forests of Suhadole provide you with an opportunity to relax in nature.

Two popular short-trip destinations in Medvode are the Polhov Gradec Dolomites and Lake Zbilje with canoe and boat rental, playgrounds for children, a volleyball court and a place for picnics. The Lazarini Manor in Valburga, which dates to the 18th century, preserves a knight's hall with illusionist frescoes by painter Eustachius Gabriel.

Mengeš is known for its old local crafts and the manufacture of musical instruments. Jable Castle was built in 1530 by the counts of Lamberg, while the parish Church of St Michael prides itself on Plečnik's baptistery and confessional. A fitness trail with a forest educational trail runs along the slopes of Gobavica, from where you may ascend the Mengeš Hut and Dobeno.

Trzin is famous for its International Folklore Festival, Florjan's Fair and the spring cultural festival Trznfest. A forest educational trail runs over the Onger Hill, which both divides and connects the old and new (industrial) parts of Trzin.

Pottery and stove making developed in Vodice due to the presence of a clay pit in Phliški Pond. The Furjans still maintain the tradition of making pottery products and clay tiles. The Jagodic family makes pretzels according to a recipe brought to the Dominican Monastery in Adergas by nuns from Germany in 1700. Šmarna gora, with the Church of the Mother of God, is a popular hiking spot.

*Funded by: EAFRD and ERDF
Leading fund: EAFRD*

Objectives of LDS:

- To boost the realisation of business ideas that contribute to the development of the area.
- To obtain entrepreneurial knowledge, and advanced qualifications and competences for easier employment.
- Active protection, maintenance and sustainable use of areas important for nature conservation and naturally preserved areas.
- To promote a sustainable lifestyle and social activity to improve the quality of the environment.
- To promote a healthy and active lifestyle.
- To provide the conditions for implementing and developing cultural creativity, and preserving cultural heritage in the local environment.
- To develop and modernise small basic local infrastructure.
- To provide a high-quality life, personal and social safety, growth and healthy development of children and adolescents.
- To promote intergenerational cooperation and high-quality active ageing.
- To respect diversity and form an inclusive society.

Projects of the LAG:

STORIES OF WETLANDS

Wetlands are among the most endangered and rapidly disappearing living environments. The activities of the project contribute to the maintenance of four wetlands with small infrastructure for observing and experiencing nature. Events, workshops and training for local guides, and extensive promotional materials guide and increase awareness of biodiversity and the ecosystem services of wetlands of local residents, and strengthens an active approach to long-term and sustainable wetland conservation in the municipalities of Trzin, Medvode, Mengeš and Vodice.

The project is implemented by: the municipalities of Mengeš, Trzin, Medvode and Vodice, the Institute of the Republic of Slovenia for Nature Conservation and Mengeš Primary School.

Fund: EAFRD

Status of the project: in progress.

KREK LOCAL CENTRE FOR NORTH-EASTERN LJUBLJANA REGION

The Krek Centre promotes the social inclusion of young people, women and older people in the local environment, and intergenerational cooperation and high-quality active ageing. The project includes training for family carers, socialising with older people experiencing loneliness and intergenerational groups. A childcare service, the so-called Granny Sitter, will be provided within workshops for families.

The project is being implemented by: the Anton Trstenjak Institute of Gerontology and Intergenerational Relations; the Intergenerational Centre Institute Komenda.

Fund: ERDF

Status of the project: in progress.

MEETINGS ON THE PLAYGROUND

Local residents of Trnovec Community decided to plan the centre of the village to provide space for meeting and socialising, events, lectures, workshops for children, a local market and picnics. Playground equipment will be set up next to a sports ground within the project. Two workshops for children and parents to socialise will be organised.

The project is implemented by: Trnovec Local Community

Fund: EAFRD

Status of the project: completed.

4 LAG Swallow

(Slovenian: LAS Lastovica)

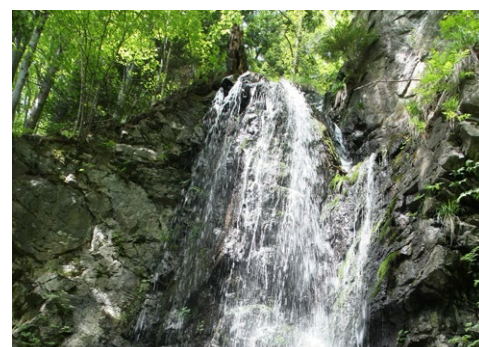


LAS Lastovica
Pohorska cesta 15
2311 Hoče

+386 (0)2333 13 17



Lead partner of the LAG:
Mariborska razvojna agencija p.o.



LAG Swallow comprises areas of three municipalities south of the urban area of Maribor: Hoče – Slivnica, Miklavž and Starše. It stretches to the flat area of the Drava Plain and is intersected by the main road connection with Pohorje, a well-known winter tourist centre.

The area is known for its opportunities for sports, recreation and relaxation, and a diverse culinary journey tour. Traditionally, winter sports lovers flock to this area, and hiking, running and cycling are also very popular. Views of plains around the Drava River from the higher parts of Pohorje, and pristine, in parts even wild, beauty of nature attract photography lovers.

Nature lovers will enjoy the hiking trails and cycling routes, and many visitors are attracted by the Botanical Garden of the University of Maribor (<http://botanicnivrtni.si/pages/si/domov.php?lang=Sl>) located in the forest between Spodnje Hoče and Razvanje. A Pohorje market takes place every Saturday at the entrance to the Botanical Garden, where local providers sell excellent, locally produced and processed food and other products. History lovers may see remains from ancient times – well-maintained Roman burial mounds in Miklavž na Dravskem polju and a crypt below the Church of St George in Hoče. If you are not a skier or hiker, there are some attractive fishing spots by the Drava River, particularly in Starše and Zlatoličje, and by ponds, i.e. Miklavški ribnik and Miklavška mlaka. Young people and the young at heart may enjoy the StellarBeat Music Festival in June. Local events also draw many visitors – a run below Pohorje in Hoče and its surroundings in spring, a welcome to autumn in Starše and Miklavž, and other sports, cultural and tourist events.

Funded by: EAFRD and ERDF

Leading fund: ERDF

Objectives of the LDS:

- To promote entrepreneurial activities and create new jobs.
- To promote new and innovative forms of connections between stakeholders in this area.
- To enhance the quality of life and spend leisure time in the best way possible.
- To preserve and sustainably protect cultural heritage in rural areas.
- To improve the state of the environment in order to enhance the quality of life (including small environmental infrastructure).
- To preserve nature and biodiversity also by awareness raising.
- To promote social inclusion (particularly of vulnerable target groups), including intergenerational integration.
- To enhance the quality of life and a healthy lifestyle.

Projects of the LAG:

POHORJE MARKET

Within the operation called 'Pohorje Market' co-financed by the EAFRD, a network for closer cooperation between providers from the greater area of the LAG is being established. The market is open every Saturday morning at the entrance to the Botanical Garden of the University of Maribor, near Hoče. Special huts that follow sustainable development principles and are made of wood add variety to its unique location among trees on the edge of Pohorje. The market's well-maintained space and additional ten wooden huts intended for providers and societies from both neighbouring municipalities will increase the appeal of this environment. Every Saturday, Pohorje Market attracts many residents from the surrounding areas and nearby Maribor seeking locally produced and processed food, and has become a centre for Saturday morning events.

Fund: EAFRD

Status of the project: in progress.

ENSURING A HIGH-QUALITY, SAFE AND HEALTHY LIFESTYLE SLOGAN

The operation called 'Safe Neighbourhood' improves the conditions for a healthy life in rural areas. All three municipalities in the area of this LAG participate in this operation; by purchasing defibrillators, they provide technical conditions for swift and efficient interventions in the event of a cardiac arrest. Other stakeholders from the area also take part in the operation along with partners from all three sectors: local organisations of the Red Cross and Caritas, fire brigades, pensioners' organisations and other organisations which operate in this area with the objective improving residents' lifestyle and quality of life. Training in the correct use of defibrillators and preventive operation constitute an important part of the operation: raising awareness of the problem and the significance of first aid, of eliminating fear of intervention, and raising awareness of the moral obligation of individuals to actually provide help when people need it. By including the social and business sectors, partners wish to expand the scope of the operation and enhance its effects throughout the area of the LAG.

Fund: EAFRD

Status of the project: in progress.

LET'S CLEAN OUR MUNICIPALITIES TOGETHER

Within the operation 'Let's Clean Our Municipalities Together', the whole area of the LAG is brought together in an effort to raise awareness of a clean and healthy environment, which is a prerequisite for a healthy lifestyle in this area. Clean-up actions and related workshops, where people will be informed of correct waste separation, the significance of saving water and other topics related to improving the state of the environment and nature protection, will be carried out within the operation.

Fund: EAFRD

Status of the project: in progress.

IMPLEMENTING OPERATIONS IN THE PROBLEM AREA

The area of the Municipality of Hoče-Slivnica has obtained additional funds within the CLLD approach as part of the problem area. With these funds, the state of this area will be improved by carrying out a range of activities, such as preparing programmes for a multigeneration centre and multigeneration meeting points, promoting cooperation among tourist providers to create new products, establishing a business network, further developing hiking trails and cycling routes, promoting a healthy lifestyle, modernising sports infrastructure, etc.

Fund: EAFRD

Status of the projects: in progress.

5 LAG Meža Valley

(Slovenian: LAS Mežiške doline)



LAS Mežiške doline
Prežihova ulica 17
2390 Ravne na Koroškem

+386 (0)59 091 080



Lead partner of the LAG:
A.L.P. Peca d.o.o.



The area of LAG Meža Valley is located in northern Slovenia by the border with Austria, and comprises the border municipalities of Ravne na Koroškem, Prevalje, Mežica and Črna na Koroškem. Numerous undiscovered corners of the area provide an opportunity for a safe and tranquil break, learning about rare animal and plant species, attractive mountain biking, climbing and hiking, learning about cultural and historical heritage, tasting good food and traditional beverages, learning about the underground of Mt. Peca and about mysterious and fairy-tale creatures of the valley between Mt. Uršlja gora and Peca.

The most visited tourist destinations include the underground of Mt. Peca (<http://www.podzemljepece.com>), where you can visit the old Mežica lead and zinc mine in Mežica, which is open to the public. Visitors may choose how they see the mine; each way is interesting and attractive. You can go by train, bike or kayak through the mining tunnels.

The whole LAG Meža Valley is located in the area of the cross-border Geopark Karavanke (<http://www.geopark-karawanken.at/slo/vstopna-stran.html>), which comprises five Slovenian and nine Austrian municipalities. Under the auspices of UNESCO, it has obtained the title of Karavanke UNESCO Global Geopark. With a strong general image related to geological heritage and the development of geotourism, it plays an active role in the development of the Meža Valley.

The Meža Valley extends between the Mt. Uršlja gora and Peca all the way to the peaks of Olševa and Raduha. The dynamic terrain provides plenty of opportunities for lovers of mountain biking, who are also warmly welcome at the eco-hotel on Koroš Farm (<http://www.bikenomad.com/si/main/kolesarskihotel>) with a comprehensive range of products and services for mountain bikers.

Visitors to the Meža Valley may go to numerous excursion and tourist farms, which serve guests homemade, traditional treats. Another interesting feature of the area is the Punkl Youth Hostel in Ravne (<http://www.punkl.si>). In terms of architecture, it is a modern low-energy building that complies with natural and bioclimatic characteristics of the surroundings. The building is in direct proximity to the Ravne Sports Park, which provides numerous opportunities to individuals and teams with its rich sports infrastructure.

Funded by: EAFRD and ERDF
Leading fund: ERDF

Objectives of the LDS:

- A successful and competitive economy, which provides high-quality jobs.
- To create a safe, healthy and attractive environment for living and working in the area of this LAG.
- To enhance the quality of life and social inclusion of all residents in the area.
- To improve traffic access and infrastructural equipment of the area of this LAG.
- To develop and upgrade local products and services, strengthen the demand for local crops and products, and revive town markets in the Meža Valley.
- To create conditions for new jobs by promoting entrepreneurial drive and activating local human potential.
- Development of sustainable tourism – the Meža Valley as a tourist product for 3E tourism, which satisfies even the most demanding guests and foreign guests, and is promoted with modern communication tools.
- To raise the quality of life of residents of the Meža Valley.
- To preserve existing natural features, and raise residents' awareness of the significance of environmental and nature protection.
- To establish innovative partnerships to prepare and implement activities for recognised vulnerable target groups in the Meža Valley.

Projects of the LAG:

HEALTHY LIFESTYLE FOR ALL GENERATIONS IN THE MEŽA VALLEY

The operation 'Healthy Lifestyle for All Generations in the Meža Valley', co-financed by the EAFRD, was a joint operation of the municipalities of Ravne na Koroškem, Prevalje, Mežica and Črna na Koroškem, and is an example of good cooperation of local communities, which all strive for the development of the Meža Valley. Within the operation, 37 multifunctional pieces of equipment and 55 fitness devices for outdoor exercise were installed on existing or new sports grounds and children's playgrounds at 16 locations in the Meža Valley. Urban equipment, such as benches, waste bins, drinking fountains, and bicycle stands were installed at locations with playground equipment and fitness devices. A dog park where dogs can socialise in a dedicated place was also set up. The operation also included the renovation of the worn-out fitness trail. In the whole area of LAG Meža Valley, over 40 events, workshops and lectures to promote a healthy lifestyle among Meža Valley residents were carried out.

Fund: EAFRD

Status of the project: completed.

ESTABLISHING TOWN MARKETS IN THE MEŽA VALLEY

The operation 'Establishing Town Markets in the Meža Valley' co-financed by the EAFRD was also a joint operation of the area of LAG Meža Valley supported and co-financed by all four municipalities in the Meža Valley. Within the operation, two new markets were established in Prevalje and Mežica, two sales premises were additionally established in separate settlements in the Municipality of Črna, while the existing market in Ravne was additionally maintained and equipped. This provided the basic conditions for the marketing of local crops and products in the valley. The investment and other activities within the operation stimulate the development of demand and supply for local products and services for better local sustainable self-sufficiency.

Fund: EAFRD

Status of the project: completed.

PROMOTING SUSTAINABLE MOBILITY AND URBAN DEVELOPMENT OF THE MEŽA VALLEY

Promoting sustainable mobility and urban development of the Meža Valley is a joint operation of the area of LAG Meža Valley co-financed by the ERDF. Within the operation, three new bicycle-sharing stations with charging stations for bicycles were established, and three existing bicycle-sharing stations were supplemented with e-bikes and bicycles with gears. Three new bicycle storage units were set up and regular bicycles were purchased, which are available to residents without the renting system. A "pump track" – a range for young people was set up. Five self-service bike repairs – columns with tools were installed.

With investments and numerous motivational workshops, the operation contributed to a greater appeal of town centres and promoted the use of energy efficient transport. The results of the operation influence sustainable mobility in urban and surrounding areas, raise the quality of life environment, thus raising the quality of life of local residents.

Fund: ERDF

Status of the project: completed.

6 LAG Loka's Mountains

(Slovenian: LAS loškega pogorja)



LAS loškega pogorja

Poljanska cesta 2
4220 Škofja Loka

+ 386 (0)4 51 20 131



Lead partner of the LAG:
Razvojna agencija Sora d.o.o.



VIDEO

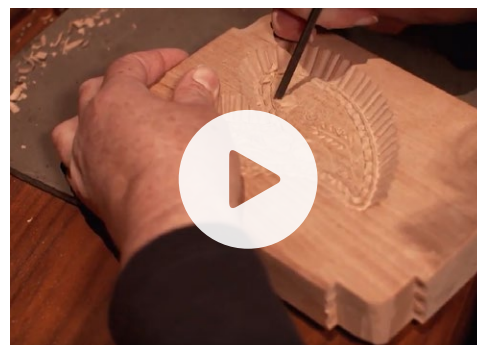


TABLE OF CONTENTS >

MAP >

LAG Loka's Mountains comprises four municipalities: Gorenja vas – Poljane, Škofja Loka, Železniki and Žiri. Škofja Loka, the best preserved medieval town in Slovenia, inspires with many stories. The beauty of the thousand-year-old town below mighty Loka Castle is boosted by the Selca and Poljane valleys with Žiri. In Škofja Loka, do not miss the Capuchin Bridge, the Homan House, the town house, the granary, the Škofja Loka Museum and numerous other bourgeois buildings: Lovers of the guild tradition may enter the Art & Craft Centre on Mestni trg. Ancient crafts have been preserved by numerous craftsmen whose workshops are open to visitors every day. Škofja Loka is the town of the Škofja Loka Passion Play, which is the oldest Slovenia drama in the largest outdoor theatrical performance. It is included on UNESCO's List of the Intangible Cultural Heritage of Humanity. When the Škofja Loka Passion Play is performed, visitors to this town become part of the performance which is based on a text from 1721. The area of Škofja Loka is also well known among hikers and cyclists who plan their trails in nature. More demanding sports enthusiasts can enjoy well-maintained mountain biking routes and hiking trails in the Škofja Loka Hills, while lovers of more leisurely walks and cycling trips can embark on easily accessible thematic and forest educational trails. While exploring nature, you will encounter forts of the Rupnik Line and the Rapallo border, which are heritage from before World War II, on ridges and vantage points. You can also explore the inside of the forts. The white idyll of the area of Škofja Loka provides opportunities for numerous active experiences. Skiers and snowboarders will find challenges in snowy steep slopes, while others can enjoy well-maintained cross-country skiing trail and sledding slopes. You can also visit ski slopes on Stari Vrh, Soriška planina and Rudno or the Mišeuh sledding slope. You will not be hungry or thirsty. You can taste the food of rural areas around Škofja Loka at numerous restaurants and tourist farms.

Visit the area of Škofja Loka and fall in love like Meta and Janez from Blossoms in Autumn.

Funded by: EAFRD and ERDF

Leading fund: ERDF

Objectives of the LDS:

- To create sustainable jobs by activating local potentials.
- To develop attractive market-relevant products and services, connect them and enhance marketing on the basis of innovative approaches.
- To increase supply with high-quality local food products.
- Environmental protection and nature conservation.

- To boost the diversity and raise the quality of services for vulnerable groups.
- To improve accessibility of services for local residents in rural areas.

Projects of the LAG:

MED-O-VITA

Project partners: LAG Loka's Mountains, LAG For Community-Initiative-Lineage, LAG Meža Valley and LAG Istočna Istra (Croatia)

The objective of the project is to present beekeeping through a tourist product and at the same time, to present Carniolan honey bee, Slovenian beekeeping and the significance of beekeeping in the preserve the environment and biodiversity. Beekeepers established the Carniolan honey bee educational trail in cooperation with the Škofja Loka Museum and the Sora Development Agency at the Beekeepers' Home of the Škofja Loka Beekeeping Society in Brode and its surroundings. The Sožitje Society, whose mission is to help persons with mental disorders, established a programme for the maintenance and use of a herb garden for the persons they care for. A beekeeping museum as a branch of the Škofja Loka Museum will be established at the Beekeepers' Home, and a tourist package "Beekeeper for a day" will be prepared.

Fund: EAFRD

Status of the project: in progress.

TRAIL OF MUSEUMS AND CULTURAL CENTRES IN THE AREA OF ŠKOFJA LOKA

Partners: Municipality of Žiri, Municipality of Gorenja vas – Poljane, Sora Development Agency, Škofja Loka Museum and Ratitovec Public Institute

Within the scope of the project, stories were formed as a means of communication with visitors, which invite domestic and foreign visitors in a fun and playful way, and provide them with opportunities to discover and experience history, the rich tradition of craftsmanship skills and the artistic creativity in the area. The Šubič House is where Book of Letters of the Šubič painters was made; the character of Koki was revived, which guides families through the Škofja Loka Museum; a blacksmith's workshop was purchased by the Železniki Museum; the Žiri Museum hosts an exhibition on the occasion of the 90th anniversary of the birth of Jože Peternel

Mavser; and the Art & Craft Centre of Škofja Loka made a film about the Loka bread. More at www.kulturnadozivetja.si

Fund: ERDF

Status of the project: completed.

COWORKING IN RAZVOJ POTENCIALOV MLADIH PODJETNIKOV ZAČETNIKOV ZA KREIRANJE NOVIH DELOVNIH MEST

Partners: Sora Development Agency, Municipality of Žiri

Desiring to enhance the recognisability of coworking and present innovative knowledge and technologies to young potential entrepreneurs, the Programme of creative and entrepreneurial knowledge was developed, which connected two local coworking centres – the Škofja Loka Incubator and Lokomotiva Coworking Centre with the Mizarnica Creative Centre from Žiri – in terms of content through workshops. Equipment was purchased for the implementation of the project.

Fund: ERDF


Status of the project: completed.

7

LAG The Heart of Slovenia


(Slovenian: LAS Srce Slovenije)





LAS Srce Slovenije

Jerebova ulica 14
1270 Litija



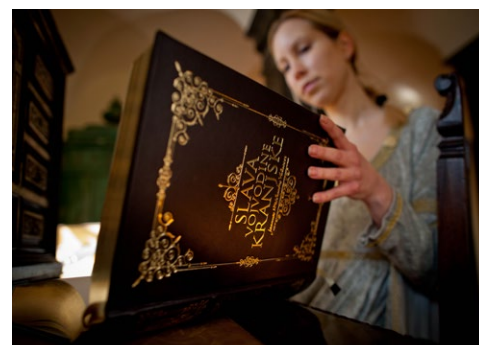
+386 (0)1 89 62 713





Lead partner of the LAG:

**Razvojni center
Srca Slovenije, d.o.o.**



LAG The Heart of Slovenia is located in the centre of Slovenia, and connects the municipalities of Dol pri Ljubljani, Kamnik, Litija, Lukovica, Moravče and Šmartno pri Litiji. The Heart of Slovenia captivates visitors who prefer meeting warm people who know how to, and want to, live better. You can breathe in the mountain air of the Kamnik and Savinja Alps or stroll among wine-growing hills of Dolenjska, flirt with Ljubljana or rest your eyes on the plains by the Sava River. In this environment, with surprising natural features, ambitious ideas are connected with tourism and sustainable development.

LAG The Heart of Slovenia was among the first active local action groups in Slovenia. Today, it is among the most recognisable and successful LAGs in the country. With development, they create opportunities for people to take care of their health and well-being. Their organisation and success are frequently recognised as examples of best practice. They are also a role model for other local action groups around Slovenia and Europe. They are very successful, as their project exist not only on paper, but are devised according to the bottom-up approach, based on the initiatives of people who work in real time and place.

Visitors are particularly fascinated by the natural beauty of Velika Planina, Lake Gradišče, the Kamniška Bistrica Valley or the Volčji Potok Arboretum. Lovers of cultural heritage like to check out the Sitarjevec Mine, Bogenšperk Castle, the birth house of Jurij Vega or a craft workshop. Adrenaline lovers may visit the Geoss Adventure Park, while those who wish to rest may go to the Terme Snovik Spa. Numerous farms engaged in wine production, the fruit industry or tourism are scattered in a diverse and pristine landscape.

In the previous programming period, LAG The Heart of Slovenia successfully carried out 83 projects through which the area received a total of EUR 1.8 million of LEADER funds and development funds from local resources. The successful work from the previous period is continuing in the current programming period.

Funded by: EAFRD and ERDF
Leading fund: EAFRD

Objectives of the LDS:

- To improve the economic and social inclusion of the community in the area of this LAG.
- To provide coherent and sustainable development in rural areas on the basis of the sustainable development of the unused potential of the area.

- To improve entrepreneurial culture.
- To boost innovation and creativity.
- To enhance the social power of stakeholders.
- To improve the maintenance of rural areas.
- To strengthen local identity.
- To improve the marketing of the tourist destination of the Heart of Slovenia and boost the diversification of tourism activity.
- To raise the quality and number of local services.
- To raise the quality of life.
- To enhance local self-sufficiency in food.
- To promote biodiversity and landscape diversity.
- To raise awareness and improve the state of the environment.
- To enhance the social functions of the forest.
- To upgrade knowledge and competences of actors in rural areas.
- To increase the share of informal care at home.
- To enhance social capital and strengthen development partnerships.
- To improve the working conditions of residents, particularly vulnerable target groups.

Projects of the LAG:

FOREST EXERCISE AREA FOR CHILDREN AND PLACE FOR MEETINGS

A forest exercise place for children and a place for meetings is a project by Miloš Kimovec s.p., which is located near the Geometric Centre of Slovenia. The park provides adventures for children and adults in the treetops, and zip-lining is particularly attractive. EAFRD funds will be used to expand what the park has to offer with an exercise place for children under four. An innovative range consisting of various elements will be set up within this project. Benches heated with wood biomass for resting will be placed around the exercise place.

Fund: EAFRD

Status of the project: in progress.

STORIES OF HANDS AND PLACES

'Stories of Hands and Places' is a project of cooperation between 11 Slovenian LAGs initiated by LAG The Heart of Slovenia. Using ERDF funds, LAGs and their craft cen-

tres will create a more favourable environment for preserving and developing crafts in Slovenia. An extensive register of craftsmen will be prepared, local stories and identities will be presented, numerous training events will be carried out to upgrade the quality of craft products, promotion and marketing. The project's greatest value is in the connection and cooperation of craftsmen for a joint venture.

Fund: EAFRD

Status of the project: in progress.

INTEGRAL TOURIST PRODUCT OF HERBAL HERITAGE

The integral tourist product of herbal heritage is a project of cooperation between six Slovenian LAGs that wish to convert the unused potential of extraordinary biodiversity and traditional knowledge of herbs into an opportunity for development. Extensive expert training of new herbalists, including the option to obtain the national vocational qualification of herbalist, the certification of selected herbs, the establishment of a joint online platform "e-herbarium", the organisation of two herb festivals, a brochure on herbs and herbalists, the concept design for a heart-shaped herb garden and the creation of an integral tourist product of herbal heritage of the Heart of Slovenia are key activities carried out in the area of LAG The Heart of Slovenia. LAGs that work together within the project transfer best practice and knowledge to each other with the common objective of achieving better recognisability of herbalism in entrepreneurship and tourism.

Fund: EAFRD

Status of the project: in progress.

8 LAG Haloze

(Slovenian: LAS Haloze)



LAS Haloze
Cirkulane 56
2282 Cirkulane

+ 386 (0)2 795 32 00



Lead partner of the LAG:
**PRJ Halo, Podeželsko
razvojno jedro**



Haloze is a dynamic range of hills in north-eastern Slovenia on sunny slopes covered with vines. This slightly remote world between the Drava and Dravinja rivers by the border between Slovenia and Croatia comprises the municipalities of Cirkulane, Gorišnica, Majšperk, Podlehnik, Videm, Zavrč and Žetale. It is famous for its pristine beauty, friendly people and excellent wines. Wine-growing gives Haloze a unique image. Wines from Haloze spread the word about Haloze around the world, and probably its name is related to wine – it derives from the Latin word Colles, which denotes vine-growing hills, vineyards. Certain people see the origin of the name in Old Slavic, in which the word Halonga meant a hilly world.

The beginning of wine-growing reaches back to the period when this was the land of the Celts, while its further development was due to the Romans. An important role in vine-growing in Haloze is played by the very favourable influence of the Pannonian climate, which is also present in most of the famous European wine-growing regions.

Most wines from Haloze are superb high-quality white wines, most of them varietal. The characteristic of wines from Haloze is their beautiful colour, a rich bouquet, aroma and harmony. The principal wine varieties are: Italian Riesling, Sauvignon, Furmint, Chardonnay, Pinot Blanc, Pinot Gris, Traminer and Yellow Muscat. In addition to fresh young wines with native and floral aromas, there are also extremely rich wines of particular maturity and manner of harvest (late harvest, selection, ice wines).

You can also visit Haloze on a one or multi-day trip or break for different purposes (wine, cuisine, ethnology, history, hiking, etc.).

You are particularly warmly invited to numerous events which recreate the customs and traditions of our predecessors (Fašenk (Shrovetide), farm holidays, setting up and putting away of wind rattles, St Martin's Day celebrations, Barbarno (St Barbara's Day, etc.). You are particularly warmly invited to numerous events which recreate the customs and traditions of our predecessors (Fašenk (Shrovetide), farm holidays, setting up and putting away of Klopotec (wind rattles), St Martin's Day celebrations, Barbarno (St Barbara's Day), etc.).

Funded by: EAFRD and ERDF

Leading fund: EAFRD

Objectives of the LDS:

- To promote the creation of new jobs, particularly by stimulating new start-ups.
- To foster the development of an innovative environment to increase the competitiveness of SME and farms.
- To connect educational and research institutions with companies/farms to develop new products for the global market.
- To establish a uniform brand that will facilitate the development of the area and new jobs through promotion, and promote the development of self-sufficiency chains.
- To enhance connections between various local actors in tourism.
- To establish recreational infrastructure.
- To develop basic infrastructure to help farmers and wine growers.
- To preserve cultural heritage sites.
- To preserve areas used for agriculture by reducing overgrown areas.
- To ensure active and healthy ageing for older people and the acquisition of knowledge and competences by young people with intergenerational cooperation.
- With various projects, to stop young people from moving away.
- Greater inclusion of disabled people.

Projects of the LAG:

CONNECTING AND BRAND FOR THE QUALITY OF WINES IN HALOZE

Within the scope of the project of the Haloze Wine Cooperative and partners, an overall brand design for the brand of wines from Haloze has been prepared, and a mobile filling line, which will enable high-quality filling of wines from Haloze, was purchased. The Cooperative operates according to the social entrepreneurship principle, and brings together over 30 wine growers and winemakers, who altogether cultivate over 200 ha of vineyards in Haloze. The project represents a significant contribution to the restructuring of wine-growing, which is the most important sector in Haloze.

Fund: ERDF

Status of the project: completed.

EXPANSION OF THE ETHNOLOGICAL COLLECTION “FROM GRAIN TO BREAD”

Within the scope of the project of the applicant, the Haloze Heritage Preservation Society, an overhanging roof for more exhibits was made. The first part of the collection is based on the presentation of tools and dishes used from the grain harvest to bread making. The second part of the collection shows tools used for sowing, harvesting and threshing. It is a permanent ethnological exhibition, which is an important element of tourist products and services of Haloze and a treasury of the ethnological heritage of Haloze.

Fund: EAFRD

Status of the project: completed.

FOREST EDUCATIONAL TRAIL TO THE THICK BEECH

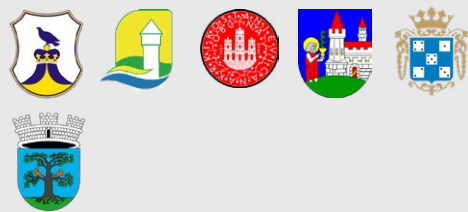
A priority project of Žetale Primary School and the Municipality of Žetale is a well-maintained Forest Educational Trail to the Thick Beech (with thematic board, tables and benches for rest and holding classes in nature) and parallel high-quality associated activities of the project (educational film about Tree-covered Haloze, charcoal pile, leaflets and maps for orientation, equipment). The well-maintained Forest Educational Trail to the Thick Beech is intended for educating primary school pupils on the significance of preserving nature and natural heritage. The hiking trail is suitable for all generations, and contributes to the development of tourism and hiking.

Fund: EAFRD

Status of the project: completed.

9 LAG Posavje

(Slovenian: LAS Posavje)



LAS Posavje
Cesta krških žrtev 2
8270 Krško

+ 386 (0)7 488 10 43



Lead partner of the LAG:
**Regionalna razvojna
agencija Posavje**



A land of castles, wine-growing hills and thermal springs

Posavje and the Terme Čatež Spa provide an abundance of opportunities for 365 days of adventures a year. The largest thermal riviera is near the confluence of the Sava and Krka rivers, which are the longest Slovenian rivers. This area is also the location of six picturesque castles. The recognisability of Posavje has increased recently, although it is among the smallest regions in Slovenia, which, according to local residents, makes it particularly endearing. Slightly less than a thousand square metres in south-eastern Slovenia are sparsely populated, and the pace of life and development is dictated by the Sava, Krka and Sotla rivers.

The centres of six towns, i.e. Krško, Brežice, Sevnica, Kostanjevica na Krki, Radeče and Bistrica ob Sotli, are busy commercial places and culturally interesting. This is a region with extraordinary geostrategic potential, as it is a border region, well developed in terms of traffic, and naturally and economically connected.

The Ljubljana–Zagreb motorway runs through Posavje, and the Cerklje ob Krki Military and Civilian Airport is near the motorway. The energy pool with the Krško Nuclear Power Plant, a thermal power plant in Brestanica and a chain of hydro power plants on the Lower Sava River meets 38 per cent of all needs for electricity in Slovenia.

All the most important industries are represented in this region; there is a wide range of products and services related to the paper, metal, textile, wood and food industries. The economic development of the region is the result of efforts at all levels. The region particularly strives to keep young educated people in the local environment with an effective scholarship policy.

Most residents live in rural areas which are suitable for the development of agriculture, the fruit industry, wine-growing, hospitality and tourism. Authentic culinary products and services attract numerous visitors, who may also spend their leisure time at the Terme Čatež Spa and the Terme Paradiso Spa, or for other recreational activities, such as cycling, golf, hunting and increasing popular sport fishing.

Posavje is home to a few lesser known but very important cultural monuments, medieval castles and churches.

Funded by: EAFRD, EMFF and ERDF
Leading fund: EAFRD

Objectives of the LDS:

- To protect nature: awareness-raising activities, concrete protection measures at NATURA 2000 sites, connecting resources for sustainable development – sustainable tourism, promoting ecosystem services.
- To preserve indigenous breeds and traditional varieties: promoting the breeding of Krškopolje pigs, preserving traditional orchards, promoting the cultivation and consumption of Raka red onions, etc.
- To protect the environment: the strategy pays special attention to preserving the quality of drinking water and enhancing reuse, maintaining small brownfield areas and promoting sustainable mobility.
- To preserve the landscape and identity of rural areas, including measures to remove invasive non-indigenous species and preserve the population and liveliness of buildings in rural areas.
- To strengthen activities to modernise fish farming, introduce environmentally-friendly techniques and technologies and efficient use of resources, and adapt to environmental requirements and innovative solutions of waste and fish sediment management.
- Social innovation: support for projects that seek new solutions to pressing problems in the area regarding social inclusion, and the development of services for special target groups and of social entrepreneurship.
- To promote the development of new technological solutions that support the preservation of the environment (e.g. in fish farming: slaughter waste, use of fish sediments as fertiliser, waste management).
- To arrive at solutions regarding the reuse and use of natural materials.
- Partnership approach: fostering innovative partnerships that connect several sectors and levels to devise new solutions and products or services which do not exist in the area.
- To facilitate the greater inclusion of young people in society, and develop new potential and talents.
- To facilitate the greater inclusion of older people, intergenerational cooperation and active ageing.
- To connect actors for them to develop support services for the social inclusion of other recognised vulnerable groups (unemployed, persons with special needs, persons with mental health problems, disabled, persons with addictions, etc.).
- Activities to improve the integration and inclusion of migrants and their families.
- Beneficiaries will be encouraged to analyse potential differences between the needs of men and women, and address them if appropriate during the preparation and implementation of operations.

Projects of the LAG:

SUSTAINABLE DEVELOPMENT OF LISCA FOR A HEALTHY POSAVJE (HEALTHY POSAVJE)

The operation 'Sustainable Development of Lisca for a Healthy Posavje (Healthy Posavje)' was approved to be co-financed by the EAFRD. The operation enhances social cohesion and the identity of the environment. Its objectives are also to raise awareness of the significance of a healthy attitude to nature and improving health, improve the usefulness of the Lisca area for the purposes of lifelong learning and better quality of life, establish a responsible attitude to food, provide better conditions for bees to achieve a better natural balance, and facilitate the comparability of honey between producers.

Fund: EAFRD

Status of the project: in progress.

IZOODI – INITIATIVE FOR A RESPONSIBLE ATTITUDE TO ANIMALS

The animal-related operation 'iZOODi – Initiative for a Responsible Attitude to Animals' was approved to be co-financed by the ERDF. The operation is based on the interaction between humans and their most loyal companions, DOGS, and, on the basis of responsible and active cohabitation, deepens general knowledge of animals and nature, solves local animal-related problems in the long term, enhances a healthy lifestyle, and promotes connections among various organisations.

Fund: ERDF

Status of the project: in progress.

CONNECTED WITH THE SAVA RIVER (COSAVA)

The operation 'Connected with the Sava River (CoSava)' was approved to be co-financed by the EMFF. The objective of the operation is to strengthen fishing, sports and recreational activities available to the widest set of social groups. They are looking to increase local self-sufficiency in fresh fish and add to tourist products and services with freshwater fishing.

Fund: EMFF

Status of the project: in progress.

10 LAG The Diversity of the Countryside

(Slovenian: LAS Raznolikost podeželja)



📍 LAS Raznolikost podeželja

Teharska cesta 49
3000 Celje

☎ + 386 (0)3 425 64 66



🤝 Lead partner of the LAG:
SIMBIO d.o.o.



LAG The Diversity of the Countryside is located in the eastern part of the Savinja Valley and connects the area of the municipalities of Celje, Laško, Štore and Vojnik. It is among destinations with the most wonderful green experiences in Slovenia, which is confirmed with the certificate of the Green Scheme of Slovenian Tourism (Slovenia Green Destination) obtained by the municipalities of Celje and Laško.

In Celje, visitors may see the old town centre and learn about the history of the area by visiting museums. The town park and forest with walking paths and a tree house are located in the proximity of the town centre. Celje Castle invites visitors with a beautiful view of Celje and the Savinja Valley, and a rich festival programme. We recommend walking up to Celjska koča, where you can try riding a bobkart, explore forest paths and visit an adrenaline park.

Even the Ancient Romans knew that well-being is a source of health and satisfaction. They were the first to develop the culture of thermal baths in the midst of pristine nature by the Savinja River in the area of Laško. Their tradition is kept alive at Thermana Laško and Rimske Terme spas on the basis of rich experiences with warm thermal springs. Laško offers a wide range of options to enjoy local experiences based on the long brewing and beekeeping traditions, thematic well-maintained trails and the Laško Beer and Flower Festival held in July.

In Štore, you may learn about the history of ironmongery, charcoal making and glass making, visit the idyllic village of Svetina, where the grave of Alma Karlin is, and rest at Dom na Svetini.

The Municipality of Vojnik boasts pristine nature and rich cultural heritage. You are cordially invited to visit tourist farms and see the Sorž Mill in Polže.

Funded by: EAFRD and ERDF

Leading fund: EAFRD

Objectives of the LDS:

- To promote entrepreneurial activities in rural areas.
- To foster connections between development partnerships.
- Training and education in entrepreneurship and agriculture.
- To improve conditions to facilitate a high quality of life and development of the area comparable to other regions.

- To preserve or improve the state of the natural environment and adapt to climate change.
- To enhance social integration and the social inclusion of all population groups.

Projects of the LAG:

ESTABLISHMENT OF AN EDUCATIONAL PARK NEXT TO ŠTORE PRIMARY SCHOOL

Within the operation, Štore Primary School and Štore Steel restored the old narrow gauge locomotive which, after decades in the school park, was worn by the ravages of time. The renovated locomotive is protected with an overhanging roof, thus enabling many generations of children to come to learn about the ironmongery tradition, which significantly influenced the development of Štore. In addition, an educational park with an outdoor classroom was established within the operation.

Fund: ERDF

Status of the project: completed.

MY STORY FOR YOUR SAFETY

Within the operation to be co-financed by the ERDF, the Vozim Institute, which brings together people injured in accidents, will raise awareness of young people of the dangers of alcohol consumption and its consequences in traffic. They trained disabled people injured in accidents to present their stories and the consequences of excessive alcohol consumption at workshops to primary school pupils in urban areas of this LAG.

Fund: ERDF

Status of the project: completed.

OUTDOOR GYM IN THE AREA OF THE DESTINATION OF LAŠKO – THE CONFLUENCE OF GOOD

The Municipality of Laško together with Thermana d.d. and the Laško Tourist Society arranged a trail of recreation and health which provides two sets of outdoor fitness

devices in the spa park by the Savinja River and brings together several forms of recreation in the park of recreation and health. Within the operation co-financed by the EAFRD, organised workouts are carried out and recreation is presented to residents of the area and tourists.

Fund: EAFRD

Status of the project: completed.

11 LAG Soča Valley

(Slovenian: LAS Dolina Soče)

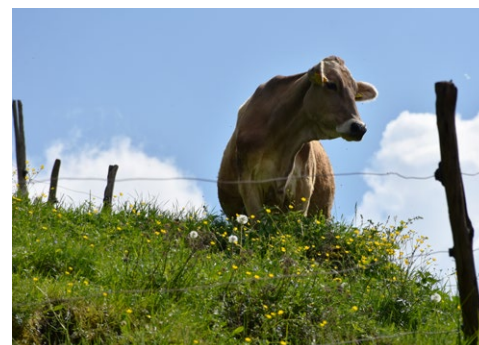


LAS Dolina Soče
Trg tigrovcev 1
5220 Tolmin

+386 (0)5 38 41 507



Lead partner of the LAG:
Posoški razvojni center



LAG Soča Valley is located in north-western Slovenia in the area of four municipalities: Bovec (13 settlements), Kanal ob Soči (35 settlements), Kobarid (33 settlements) and Tolmin (72 settlements).

LAG Soča Valley prides itself on numerous special features which mark the area. Part of the area stretches into the Triglav National Park and is partly part of the first biosphere reserve in Slovenia, characterised by the preservation of a balance between residents of the Julian Alps and nature, and between biodiversity and sustainable development through the preservation of cultural values. The area is also characterised by natural beauty, where nature has not stinted on imagination and unique cultural landscape. We also boast the emerald Soča River, one of the most beautiful rivers in the world and home to several indigenous animal and plant species such as the short-haired sandwort and the Soča trout. The trout was thought to have been extinct due to interbreeding with the brown trout. However, fishermen from Tolmin unwittingly discovered genetically pure populations in the upper part of the Soča River and made sure that the species has been preserved. On account of the rare features and extreme size, this fish species, which is named after the said river beauty can achieve, it attracts anglers from around the world to this area.

The valley surrounded, with mountains and hills, differs from other valleys in having numerous remains from a hundred years ago, when the area was marked by the greatest battle in a mountainous area in human history and the greatest battle on the territory of the present-day country. To remember and remind, numerous organisations and institutions strive to preserve the heritage of that time. One of the gems which invites people to reconcile and live peacefully is the Memorial Church of the Holy Spirit in Javorca, which has been awarded a special recognition – a European Heritage Label by the European Commission.

The soul of LAG Soča Valley is its residents, who produce high-quality crops and products. We also take pride in two locally typical types of cheese, i.e. Tolminc and the Bovec cheese, labelled with the protected designation of origin.

Funded by: EAFRD, EMFF and ERDF

Leading fund: EAFRD

Objectives of the LDS:

- To boost competitiveness.
- To improve entrepreneurial knowledge and skills.

- To increase the use of local products.
- To promote a healthy and active lifestyle.
- To modernise tourist infrastructure.
- To strengthen the role of the local community.
- To preserve/improve the state of natural and cultural heritage.
- New systemic approaches and networking.
- Responsible use of natural resources.
- To preserve and promote local traditions.
- To improve conditions for vulnerable groups.
- To improve knowledge and competence.
- To facilitate new activities for vulnerable groups.

ditions for organising events and visits – a unique tourist destination where various local actors will connect and network. Together with restoration, local traditions will be preserved and promoted, cultural elements of the urban area will be protected, the potential of tangible and intangible heritage will be used, and design challenges in relation to the business environment that will enable the creation of new jobs will be tackled. Through training regarding youth tourism in the municipality, options to develop such tourism will be sought, which will contribute to resolving the problem of young people moving out of the municipality.

Fund: ERDF

Status of the project: completed.

Projects of the LAG:

REVITALISATION OF THE SPACE AND MIND (REMIND)

LAG Soča Valley and its ten partners have been implementing a joint operation in the whole area of this LAG to learn how to manage the environment economically, taking into account sustainable, ecological principles and the history of the area. It includes the revitalisation of agricultural land, the removal of non-indigenous species, promoting the settlement of remote villages, the creation of conditions for crop rotation, the implementation of expert training for the wider public and farmers, the development of sports and tourist equestrianism, the renovation of the Ravni laz village dairy, the transformation of the Drežnica building into a place for meat processing and sale, and the introduction of a new supply chain. A feasibility study of olive groves and an agricultural census in demographically endangered villages without successors will be carried out. Status projekta: v izvajanju.

Fund: EAFRD

Status of the project: in progress.

KONTRADA SQUARE (KONTRADA)

The Kontrada operation implemented by the municipality of Kanal ob Soči with its partner revives the culturally protected part of Kanal, and improves the recognisability of the square and the significance of intangible heritage. The well-maintained market centre of Kanal, i.e. Kontrada Square, will become a unique venue with better con-

12 LAG STIK

(Slovenian: LAG STIK)

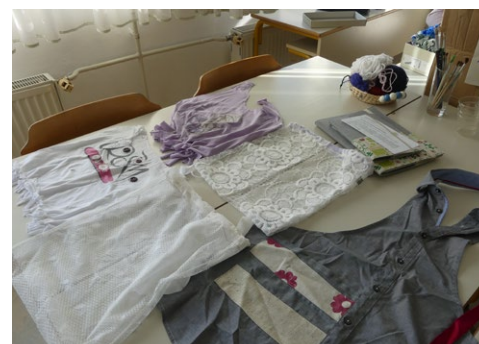


LAS STIK
Kidričeva ulica 2
8210 Trebnje

+ 386 (0)7 34 82 100



Lead partner of the LAG:
Center za izobraževanje in kulturo Trebnje



LAG Suha krajina, Temenica and Krka (LAG STIK) is a local action group established at the initiative of four municipalities: Dolenjske Toplice, Ivančna Gorica, Trebnje and Žužemberk. The municipalities are located in the area of Suha krajina and the Temenica Valley, connected by the Krka River basin.

The area boasts a rich history, natural and cultural heritage, and spa, wellness and religious/pilgrimage tourism.

The Municipality of Dolenjske Toplice is home to one of the most visited spas in Slovenia, which was already mentioned by Janez Vajkard Valvasor: "As far as spas are concerned, there is a spa in Central Carniola so good that people from afar visit it."

This LAG takes pride in the oldest monastery on the territory of present-day Slovenia and the only operational abbey, the Cistercian abbey. The ancient parish of Šentvid-boasts an even longer tradition, and is known today as the cradle of Slovenian choral singing.

Over 1200 naïve artworks created during meetings found a home at the Gallery of Naïve Artists Trebnje, which is the only collection of naïve art in Slovenia, and among the most important in the world.

Sandy ground above a green river; a castle stands at the top. History spread all over, growth, bloom, and decay," wrote Tone Pavček in a poem entitled Žužemberk.

Kočevski Rog, the beauty of Dolenjska, the Krka River, with its barrage tufa, the Temenica River, where numerous water wheels used to spin, the Jurčič Homestead in Muljava, the Technical Museum of Slovenia in Bistra – Soteska Depot of Vehicles, the Museum of Native Gottschee Settlers, the Iron-foundry Museum and Art Gallery are only a few of the many sights that attract people to the area of LAG STIK.

Funded by: EAFRD and ERDF
Leading fund: EAFRD

Objectives of the LDS:

- To increase the number of employees.
- To raise awareness particularly among young people of entrepreneurial opportunities and establish innovative partnerships.

- To transfer knowledge between generations, and preserve and revive old professions and crafts.
- To increase the number of new products related to the local environment and promote their development.
- To enhance the marketing of local products and services, and the recognisability of the area.
- To raise awareness of environmental protection and the significance of natural and cultural heritage, and reinforce identification with the local environment.
- To preserve local potentials of the area, and connect rural areas and towns (urban areas).
- To increase the use of local renewable energy sources, energy efficiency.
- To enhance the inclusion of young people, women, Roma and other vulnerable groups in the social environment and the labour market.
- To raise the quality of life of older people and other vulnerable groups and raise awareness of intergenerational cooperation.

oven will create conditions for the expansion of tourist products and services. The traditional Škreblfest event, and educational programmes concerning the production and processing of fruit and herbalism will foster the development of cultural, leisure and other activities, which contribute to greater social inclusion. Modernisation is supported by the following new products: "Škreblni from Čatež" – a mixture of dried fruit (plums, apples and pears) and a tea mixture named "A Handful of Sun".

Fund: EAFRD

Status of the project: in progress.

Projects of the LAG:

HAND INTELLIGENCE

The operation will contribute to the preservation and creation of jobs, particularly by employing one person and promoting self-employment in rural and urban areas, raising awareness and active inclusion in workshops, and enhancing knowledge and innovation required in the future, as needs for the protection of resources are increasing. To activate local residents and raise their awareness of entrepreneurial opportunities in the domestic environment, workshops and training will be carried out to strengthen skills and knowledge for new products based on a circular economy, which is crucial for entrepreneurship and new jobs in the future.

Fund: EAFRD

Status of the project: completed.

"ŠKREBL" FROM ČATEŽ AND A HANDFUL OF SUN

The operation is intended particularly to enhance the marketing of local products and services, and the recognisability of the area. "Škrebl" is an old word from Čatež meaning dried fruit. The renovation of the drying room by replacing the fruit drying

13 LAG Goričko 2020

(Slovenian: LAS Goričko 2020)



LAS Goričko 2020
Martjanci 36
9221 Martjanci

+386 (0)2 53 81 664



Lead partner of the LAG:
Bistra hiša Martjanci - Smart House Martjanci



Visit the hilly areas between the Mura and Raba rivers, see the beauty and taste treats. LAG Goričko 2020 is located in north-eastern Slovenia at the meeting point of Slovenia, Austria and Hungary. It comprises the municipalities of Cankova, Gornji Petrovci, Grad, Hodoš, Kuzma, Moravske Toplice, Murska Sobota, Puconci, Rogašovci, Šalovci and Tišina. The area is an island in the middle of different regions, making it special, as it boasts rich natural and cultural heritage. Since the area of Goričko has not experienced any difficult or violent changes, the cultural landscape has remained the same in the true meaning of the word. The Goričko Landscape Park is responsible for the conservation of healthy nature, and the diversity of meadows, orchards, swamps and dry sites. The area and its hills is an attractive destination for numerous recreational cyclists and hikers. An abundance of cultural and religious buildings scattered around Goričko also contribute to the area's attractiveness. In Grad, you can see the largest castle complex in Slovenia, the Church of the Ascension of Our Lord – Plečnik's church in Bogojina, a unique Roman rotunda with Early Gothic paintings in Selo and countless other sights. Many tourist farms, wineries and restaurants will make sure that you do not suffer from hunger or thirst. They will offer you traditional dishes, such as *retaši*, *Prekmurska gibanica*, *dödöli*, *bujta repa*, *bograč*, *zlevanke*, ham from Goričko and countless others. In addition to culinary products, you may enjoy high-quality wines, spirits, liqueurs and honey products. We recommend wine lovers visit the modern Marof wine cellar in Mačkovci. In Goričko near Trdkova, you may also experience the meeting point of Slovenia, Austria and Hungary, and the Vulkanija Adventure Park near Grad, and swim in the black, healing thermal mineral water in the Moravske Toplice Spa. Visit us and experience the hospitality of people from Goričko for yourself.

Funded by: EAFRD and ERDF
Main fund: EAFRD

Objectives of the LDS:

- To activate local potential and create new jobs or additional sources of income.
- To improve conditions for leisure time and sports and recreational activities.
- To boost the attractiveness of the area of this LAG for tourists by utilising cultural elements and natural features.
- To preserve natural heritage and biodiversity.
- To improve the use of natural resources and the efficiency of energy consumption.
- To increase opportunities for reintegration in the labour market and social environment, and enhance intergenerational cooperation and the social inclusion of vulnerable target groups.

Projects of the LAG:

RURAL TOURIST INFORMATION CENTRE

With an investment in tourist infrastructure for the sustainable arrangement of the destination area located at the Rakičan Mansion, the Rural Tourist Information Centre, by the holder of the operation Research and Educational Centre Rakičan Mansion, will establish tourist infrastructure in the form of a tourist information centre or a visitor centre to promote tourism products and services in rural areas, which will contain all tourism products and services in the area of this LAG, highlighting the preservation and promotion of natural and cultural heritage, nature-friendly tourism and connections between providers from various segments (farms, restaurants, accommodation providers, etc.). You can read more about the project on the website of LAG Goričko 2020 (<http://www.las-goricko.si/operacije/eksrp/javni-poziv-20162/ptic/>).

Fund: EAFRD

Status of the project: completed.

ŠTORKLJA INTERGENERATIONAL COOPERATION CENTRE

With investment, the preparation and implementation of the content-related part of the programme, information and promotion of the programme, the Štorklja Intergenerational Cooperation Centre, by the holder of the operation Pribinovina proizvodno in storitveno podjetje d.o.o., will establish a multigenerational centre with space for socialising and leisure time, and day-care for older people, thus improving opportunities to socialise and spend leisure time in the area of this LAG. You can read more about the project on the website of LAG Goričko 2020 (<http://www.las-goricko.si/operacije/eksrp/javni-poziv-20162/storklja/>).

Fund: EAFRD

Status of the project: in progress.

OLI'S VOLCANIC ROUTE

With new acquisitions and services (educational excursions, displays, application, workshops and lectures), Oli's Volcanic Route by the holder of the operation the Grad Cultural Heritage Management Institute will generate more visits to the volcanic area within the and to Goričko in general, greater awareness of nature protection,

and of the significance of natural and cultural heritage, and contribute to long-term acquisitions, which will attract visitors and give them a high-quality interpretation in the natural environment for years to come. You can read more about the project on the website of LAG Goričko 2020 (<http://www.las-goricko.si/operacije/esrr/javni-poziv-2017/po-vulkanu/>).

Fund: ERDF

Status of the project: in progress.

14 LAG Obsotelje and Kozjansko

(Slovenian: LAS Obsotelje in Kozjansko)



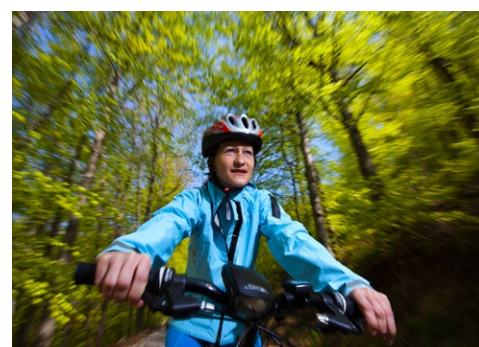
LAG Obsotelje in Kozjansko

Aškerčev trg 24
3240 Šmarje pri Jelšah

+ 386 (0)3 817 18 60



Lead partner of the LAG:
Razvojna agencija Sotla



LAG Obsotelje and Kozjansko covers the area of five municipalities (Kozje, Podčetrtek, Rogaška Slatina, Rogatec and Šmarje pri Jelšah) which have many common geographical and historical characteristics, presenting a coherent whole, which facilitates common development and the implementation of joint development projects and programmes related to rural development.

Rural areas and their special features provide opportunities utilised by the area of Obsotelje and Kozjansko as its competitive advantage. Unique meadow orchards, particularly in the area of Kozjansko Regional Park, are good examples of nature-friendly sustainable farming. With their distinct image, they constitute an important aesthetic category and contribute to preserving a typical sight in the landscape. A large portion of this LAG is taken up by the Kozjansko and Obsotelje Biosphere Reserve, which is part of UNESCO's Man and the Biosphere Programme (MAB) which promotes efforts for coexistence between people and their environment, and establishes the World Network of Biosphere Reserves.

While learning about the unique natural beauty of the area of this LAG, you can visit the largest outdoor museum in Rogatec, a unique crystal factory in Rogaška Slatina, where you can see the production of crystal products on a guided tour, and relax in one of two natural health resorts, i.e. Rogaška Slatina or the Terme Olimia Spa. In Rogaška Slatina, you can have a glass of unique Donat Mg mineral water, which is deemed the mineral water with the highest magnesium content in the world. In the Terme Olimia Spa, treat yourself to some pampering at the Orhidelia Wellness, which was named the best wellness... in Slovenia for the ninth year in a row, or to an adrenaline-filled descent in the Aqualuna Thermal Park, which is home to vertigo-inducing slides and fast chutes on over 3,000 m² of water surface. There is also the unique Baroque Museum and Baroque religious masterpieces in Sladka Gora and Šmarje pri Jelšah. You can learn about local gastronomy on the Šmarje–Virštanj wine tourism road (VTC 10), and if one day is not enough, you can spend the night in one of many accommodation facilities (camping site, glamping, vineyard cottages, hotels, etc.).

Funded by: EAFRD and ERDF

Leading fund: EAFRD

Objectives of the LDS:

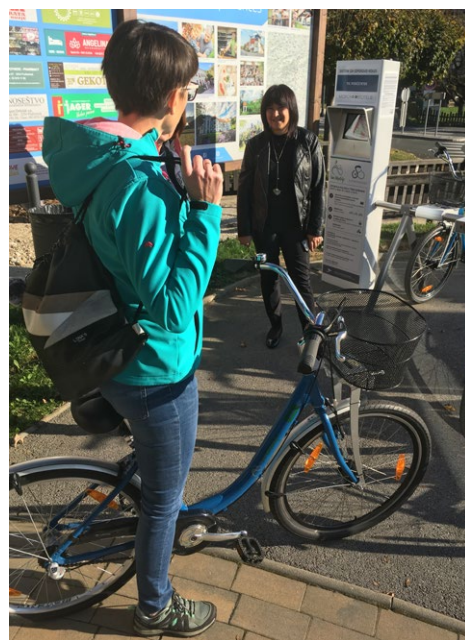
- To improve living conditions in the area of this LAG.
- To boost the competitiveness of the economy and economic growth in the area of this LAG.

- To develop a sustainable tourism destination.
- To increase social and cultural capital.
- To improve traffic access and the infrastructural equipment of the area of this LAG.
- To establish an environment that supports entrepreneurship, and improve qualifications for entrepreneurship and employment.
- To establish conditions for marketing local products and services.
- To develop new tourist products and low-value investments in support infrastructure.
- To preserve existing natural features, and raise residents' awareness of the significance of nature conservation and environmental protection.
- To develop additional green products and services in the area.
- To promote sustainable mobility measures.
- To establish conditions for lifelong learning and intergenerational socialising.
- To establish conditions for an active lifestyle.

Projects of the LAG:

SUSTAINABLY MOBILE OBSOTELJE

The operation envisages the establishment of an automated bicycle-sharing system in the municipalities of Podčetrtek and Rogaška Slatina. It complies with the tourist orientation of both municipalities, which have recently won some prestigious awards; both were awarded the gold Slovenia Green Destination label for green sustainable orientation.



The system will function according to the principle of taking and returning bicycles at any of the available stations in the system, and will support public self-service access to bicycles. A total of six bicycle-sharing stations with pertaining equipment are foreseen. Three of them will be located in Podčetrtek and three in Rogaška Slatina. Each station will have at least ten docks for bicycles. A total of 42 bicycles will be available at all stations, which means seven bicycles per station.

Fund: ERDF

Status of the project: completed.

RETRO PERMACULTURE TO REDUCE DEMENTIA



The operation fosters the development of new products for future needs which are emerging in an ageing society, a 40-per cent increase in dementia and unpreparedness of Slovenia (and the area of the LAG) to manage the consequences of an ageing society. Nursing homes are already full, and if we do not find an alternative, serious problems will arise in the management of the consequences which relatives of persons with dementia cannot manage due to the stigma of dementia. Basic knowledge of the management of this disease is still insufficient.

The operation supports a better quality of life for older people with dementia in an innovative way by using retro permaculture – a mobile garden. The results of the operation: one new job (permanent employment at least five years after the completion of the operation), eight training workshops for unemployed young people, five demonstration workshops in the area of the LAG, the development and realisation of various sets (20) for retro permaculture, and six workshops 'Options for an active lifestyle to reduce dementia', four training workshops 'Development of entrepreneurial activities considering future needs' and one informal network for social activation and environmental protection.

Fund: EAFRD

Status of the project: completed.

15 LAG With the kind people 2020

(Slovenian: LAS Pri dobrih ljudeh 2020)



LAS Pri dobrih ljudeh 2020
 Renkovci 8
 9224 Turnišče

+386 (0)2 53 81 663



Lead partner of the LAG:
Društvo za trajnost virov
Si.energija



LAG With the kind people 2020 covers the area of the Pannonian Plain in north-eastern Slovenia. It includes the municipalities of Beltinci, Črenšovci, Dobrovnik, Kobilje, Lendava, Odranci, Turnišče and Velika Polana. A rich natural and cultural heritage, spa tourism, numerous hiking trails and cycling routes, and hidden gems facilitate both active and leisurely spending of time.

Beautiful nature provide opportunities to indulge in the environment, relax and fill yourself with energy or explore unexplored corners, Genuine contact with nature and its exploration is possible at every step. For a more active break, you may ascend the Vinarium Panoramic Tower in Lendava, test your skills in an adventure park in Dobrovnik or get wet descending down the Mura River. Various churches, castles, museums and exhibitions, along with numerous events, such as the Lendava grape harvest, the Bogračfest, Hotiza Fishing Days, the Jenamena fest, the Folklore Festival or St Vid Blessing, which provide colourful events throughout the year, will satisfy the desires of culture lovers.

Local residents respect and maintain what their predecessors left them. Craft and ethnological knowledge is thus passed on from generation to generation, and there is an abundance of opportunities for you to learn about the tradition and even test your skills in, for example, knitting bast.

Numerous culinary providers will make sure that you do not go hungry or thirsty with modern and genuine homemade dishes, such as bograč, home-made sausages with bujta repa, ham from Goričko, dödöli, langaš, retaši, Prekmurska gibanica, etc. You can also enjoy high-quality wines, spirits, liqueurs and juices.

You are cordially invited to visit kind people to the region that will charm you.

Funded by: EAFRD and ERDF
Leading fund: EAFRD

Objectives of the LDS:

- To activate the local potential of the area and create new jobs, or facilitate additional sources of income in rural areas.
- To improve conditions for leisure time and sports and recreational activities.
- To boost the attractiveness of the area of this LAG for tourists by utilising cultural elements and natural features.

- To improve the state of the environment and biodiversity and preserve cultural heritage in the area of this LAG.
- To improve the use of natural resources and the efficiency of energy consumption.
- To increase opportunities for reintegration into the labour market and social environment, and enhance intergenerational cooperation and the social inclusion of vulnerable groups in the area of this LAG.

Projects of the LAG:

INTEGRAST – DEVELOPMENT OF INTEGRATIVE COMMUNITY SOLUTIONS

The project will pay attention to the development and pilot implementation of community social services for older people in rural areas, and significantly contribute to improving the social inclusion of vulnerable groups from the area of the LAG With the kind people 2020. The project established an innovative cross-sectoral partnership that will develop new approaches and practices to solve current social problems, creating opportunities for vulnerable groups to develop their creative potential, and participate equally in educational, work-related and social processes in general.

Fund: ERDF

Status of the project: in progress.

CULTURAL TOURISM OF PANNONIAN RURAL AREAS

The CulTure Project will create a new tourist product based on natural and cultural heritage, with an emphasis on cultural themes. Products and services in the whole area will be enriched with high-quality products and services, connected, made attractive, labelled in an innovative way and promoted with joint promotional activities. A tourist information centre with a shop will be established and equipped, two wooden sculptures (a blacksmith and a distiller) will be erected, and a mobile wooden kiosk with promotional souvenirs will be set up. Organised events will help preserve certain customs and traditions, which will enable traditions to be passed on to younger generations.

Fund: EAFRD

Status of the project: completed.

ESTABLISHMENT OF ACCOMMODATION FACILITIES IN VINEYARD COTTAGES

The purpose of the operation is to boost tourism in vineyard cottages. Empty vineyard cottages will be revived, and owners will receive additional income. At the same time, new accommodation facilities will be provided. Tourists will be able to enjoy the superb experience of staying in traditional vineyard cottages surrounded by natural and cultural heritage, and e-bikes will ensure ecological and healthy mobility.

Fund: EAFRD

Status of the project: in progress.



16 LAG Good for us

(Slovenian: LAS Dobro za nas)



LAS Dobro za nas
Trg svobode 5
2310 Slovenska Bistrica

+ 386 (0)2 620 22 70



Lead partner of the LAG:
**Razvojno informacijski center
Slovenska Bistrica**



[TABLE OF CONTENTS >](#)

[MAP >](#)

LAG Good for us operates in the area of the municipalities of Makole, Poljčane, Rače-Fram and Slovenska Bistrica, and stretches from Pohorje, over Dravinjske gorice to Haloze, and also includes the south-eastern part of the Drava Plain. Its relief is very dynamic; over 38,000 people live there. The municipalities are characterised by the same relief and geographical characteristics, historical and political connections, the shared interests of people and infrastructural development (cycling routes, wine tourism roads (VTC), waste landfills, water supply system and others), and similar natural features (parks, forests, lakes and others). The area is also historically and politically connected. Residents have common interests and have been connected by projects in recent years.

The programming period 2007–2013 saw 31 successfully implemented projects, which improved the quality of life in rural area, the development of the economy and partnerships for the better performance and recognisability of the area. Therefore, the LAG has been proceeding with its vision from the previous period in the programming period 2014–2020.

“The area of the LAG – a high-quality place for living and working for all generations in the area of the local action group.”

Bistrica Castle is well worth seeing, and a stroll through Bistrica Gorge all the way to Fort Ančnik, where the remains of a Late Antiquity fort have been found, is also wonderful. Studenice is home to the mighty Studenice Monastery, and a live nativity scene, which attracts visitors from near and far, is on display each year.

Projects carried out in the previous period can also be seen, i.e.: ‘Windmill’, ‘Display of Cultural Heritage in Villages’, ‘Beekeeping Educational Trail of Honey Plants’, ‘Earth House to Utilise the Energy of the Earth’, ‘Let's Supply LAG Good for us’, ‘Images of Bistrica Homesteads’, ‘Livestock Exhibitions’, ‘Reconstruction of the Kavkler Cellar’, and ‘Bird Observation Tower’.

Funded by: EAFRD and ERDF
Leading fund: EAFRD

Objectives of the LDS:

- To develop (social) entrepreneurship and crafts, and promote green jobs.
- To foster connections between local development stakeholders.

- To raise the quality and increase the scope of infrastructure for basic services (particularly sustainable tourism).
- To upgrade existing, and develop new, programmes and activities, which improve the quality of life.
- To raise awareness of the significance of protecting the environment and natural resources.
- To use renewable energy sources.
- Innovative ecosystem solutions.
- To enhance the social inclusion of vulnerable groups into the local environment.

Projects of the LAG:

ŠTOKWENZEL – REVIVING THE HERITAGE OF WINE-MAKING

The first to be approved for the co-financing by the EAFRD is the operation 'Štokwenzel – Reviving the Heritage of Wine-Making' by applicant ŠtokWenzel, Aleš Wenzel s.p, which is focused on reviving cultural heritage in an innovative way by presenting products made of old used materials. The old wine cellar, which is a cultural monument, will be reconstructed. The purpose of reconstructing the cellar is to use the space to present their own products made of recycled wine barrels, and connect with local stakeholders (gastronomes, wine-makers) The combination of various activities, such as crafts and cuisine, is a new approach to providing tourist products and services.

Fund: EAFRD

Status of the project: in progress.

'BLUE WORKSHOP – FROM EXPERIMENT TO PROFESSION'

The operation 'Blue Workshop – from Experiment to Profession' by the applicant Simetris Morje Institute is co-financed by the EAFRD. The purpose of the operation is to establish the 'Blue Workshop' centre as a community centre for technical and other creativity, where children, young people and adults learn how to create and develop (business) ideas, and how to recognise and plan their own career paths through it. The centre also includes elements of the so-called fab lab, where participants can produce products in a model workshop by means of a laser engraving machine and

a 3D printer. In this way, they may test and create own ideas and products to take steps towards developing their own products.

Fund: ERDF

Status of the project: in progress.

17 LAG Mislinja and Drava Valley

(Slovenian: LAS Mislinjske in Dravske doline)



📍 LAS Mislinjske in Dravske doline

Meškova 2
2380 Slovenj Gradec

☎ + 386 (0)2 88 12 110



🤝 Lead partner of the LAG:
Mestna občina Slovenj Gradec



LAG Mislinja and Drava Valley, which covers the areas of eight municipalities in two valleys (Dravograd, Mislinja, Muta, Podvelka, Radlje ob Dravi, Ribnica na Pohorju, Slovenj Gradec, Vuzenica), is characterised by connections between natural and cultural heritage, and a strong local identity to facilitate experiential travel in an authentic natural environment with well-developed sports and recreational products and services. The area also provides an abundance of opportunities for the rapid sustainable development of tourism, with an emphasis on spending leisure time in nature. Winter sports facilities (Kope and Ribniško Pohorje ski centres) slightly predominate, but hiking, mountain biking, rafting, water sports on the Drava River – the Reš natural bathing area, sports fishing on the Drava River, the Reš Pond and tributaries of the Drava River, equestrianism, hunting tourism, etc. – are also well developed. In addition to options for mountain biking, well-maintained cycling routes through both valleys should also be mentioned. The slopes of the Mt. Uršlja gora passing the Plešivec Mill and estate and leading up to the highest located church in Slovenia captivate hikers both in the summer and in the winter.

Museums, galleries, collections and local sights, and old town and village centres attract and captivate numerous visitors. Culture aficionados will love the birth house of Hugo Wolf and the accompanying museum, the Koroška Gallery of Fine Arts, the Koroška Regional Museum, etc. By arranging a campsite and the Reš bathing lake in Radlje ob Dravi as the first natural bathing area in Slovenia, this LAG has enhanced the significance of summer tourism.

Funded by: EAFRD and ERDF

Leading fund: EAFRD

Objectives of the LDS:

- To help create new jobs.
- To support financial investments to create new jobs.
- To support operations that include the creation of jobs.
- Successful implementation of operations to create jobs.
- To enhance residents' access in rural areas to basic services, infrastructure.
- To support financial investments in operations that facilitate new, or improve, services/infrastructure.
- To support operations that include constructing and renovating services and infrastructure in rural areas.
- Successful implementation of operations to develop fixed assets.
- To reactivate or renovate abandoned and unused rural areas.

- To support financial investments in operations that protect the environment and preserve nature in rural areas.
- To support operations that affect environmental protection and nature conservation in rural areas.
- Successful implementation of operations for environmental and nature protection.
- To encourage residents in rural areas (vulnerable groups) to be included in social inclusion programmes.
- To support financial investments in operations that influence the greater inclusion of vulnerable groups.
- To support operations that affect the greater inclusion of vulnerable groups.
- Successful implementation of operations for greater inclusion of young people, women and other vulnerable groups.

Projects of the LAG:

INNOVATIVE FORMS OF URBAN MOBILITY

The project fosters innovative forms of urban mobility (roller skating, BMX riding, e-bikes), and pays special attention to vulnerable groups and other residents of other urban areas. The purpose of the project is to promote the social inclusion and integration of vulnerable groups into social life.

Most people still consider the use of e-bikes and other urban forms of mobility as a thing of the future. In most urban centres, sustainable forms of transport are accessed more easily, while in the area of the Mislinja and Drava valleys, they remain unknown. Therefore, another purpose of the project is to facilitate and present the use of urban mobility to residents of urban areas in the Mislinja and Drava valleys. The project indirectly results in more active spending of leisure time, the use of electric/sustainable vehicles, and better environment and environmental protection (use of electric vehicles – i.e. bikes), and contributes to mitigating climate change (in terms of lower CO₂ emissions and dust particles on account of the use of sustainable forms of mobility/sustainable means of transport), innovation and contributes to promoting equality between men and women, and non-discrimination. The said horizontal objectives, which are being realised through the project together with projects' objectives, affect the vision and objective of the LAG.

“Green jobs and coherent and sustainable rural development based on developing the local potential of rural areas for better economic and social inclusion.”

The objective of the project is “to promote the participation of residents of rural areas and of other urban areas in social inclusion in innovative forms of mobility” and “to promote innovative forms of urban mobility with a special focus on vulnerable groups (young people under 30, women, disabled, pensioners) and their participation in social inclusion.

Fund: ERDF

Status of the project: completed.

ARRANGEMENT OF A CAR PARK IN THE VUZENICA SPORTS PARK AND SETTING UP OF AN OUTDOOR GYM

The main reason for the investment is to modernise a sports park with the necessary infrastructure: a public car park, and the purchase and setting up of new sports tourist infrastructure in the area of the Municipality of Vuzenica, which will support various types of sport for residents of urban areas of the municipality and daily visitors, tourists and top athletes for training and competition preparation.

The objective of the investment is to provide a suitable car park to arrange stationary traffic in the centre of Vuzenica by facilitating access to public buildings: school, nursery, health-care centre), and to provide an attractive place for a sports and recreational activity: an outdoor gym.

Fund: EAFRD

Status of the project: completed.

18 LAG Dolenjska and Bela krajina

(Slovenian: LAS Dolenjska in Bela krajina)

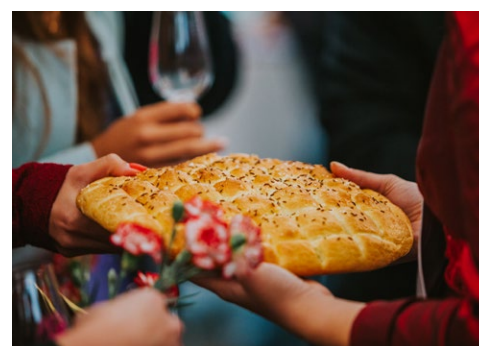


LAS Dolenjska in Bela krajina
Podbreznik 15
8000 Novo mesto

+ 386 (0)7 33 72 980



Lead partner of the LAG:
Razvojni center Novo mesto d.o.o.



The area of LAG Dolenjska and Bela Krajina covers a geographical unit of 12 municipalities (Črnomelj, Metlika, Mirna, Mirna Peč, Novo mesto, Mokronog-Trebelno, Semič, Straža, Šentjernej, Šentrupert, Škocjan and Šmarješke Toplice) connected by the simplicity of rural areas, numerous hidden corners, opportunities for active holidays and pleasure with culinary treats that contain tradition and local ingredients.

91,689 residents have been creating their story in an area covering 1251.9 km² also using EU funds.

The southernmost areas of Slovenia are particularly rich in natural and cultural heritage. These areas include Natura 2000 sites; their relief is dynamic, contains numerous watercourses and predominantly karst natural features, towns and villages, architectural and intangible cultural heritage, health resorts and hospitable local people on both sides of the Gorjanci Hills, who invite visitors to taste home-made wines and tasty local food.

In the area of LAG Dolenjska and Bela krajina, everyone may become master of a vineyard cottage and enjoy a different experience in the wine-growing hills. We recommend visiting the only outdoor hayrack museum in the world, the Land of Hayracks in Šentrupert, where you can also taste local treats related to the Dobrote Dolenjske brand. Šmarješke Toplice is home to special natural springs, while Otočec and Vinica host castles which take you to ancient times for a moment. For more active people, we recommend a hike to Trdinov vrh Hill in the Gorjanci Hills or to the third-highest peak in Bela Krajina, Mt. Mirna gora. In the southernmost part by the Kolpa River (Eden 2010, destination), local residents and guests can enjoy bathing and boating in the pure river or take advantage of empty roads to explore the surroundings by bicycle.

Funded by: EAFRD and ERDF
Leading fund: EAFRD

Objectives of the LDS:

- To utilise local potential (cultural, natural and local) to create new jobs.
- To establish conditions for green jobs.
- To enrich the diversity of rural areas and preserve the quality of life for the long-term benefit of all residents in rural areas.
- To utilise the potential of the environment to develop green and sustainable tourism.

- To maintain or improve the state of endangered plant animal species and habitat types in relation to cultural heritage.
- To reduce environmental pollution by using new, alternative forms of mobility.
- To create conditions to improve the social inclusion of disadvantaged groups.

Projects of the LAG:

INTERPRETATION OF NATURAL AND CULTURAL HERITAGE IN LAHINJA REGIONAL PARK

The idea of LAG Dolenjska and Bela krajina is to promote active connections between local residents in the area, especially to help realise important and good projects in both rural and urban areas. The supported projects that are in progress form a mosaic of the development of Dolenjska and Bela krajina. One such project is the 'Interpretation of Natural and Cultural Heritage in Lahinja Regional Park', whose purpose is to raise awareness of local residents and visitors alike of the significance of, and ways of, preserving endangered plants and animals. Key activities include the implementation of workshops and actions by restoring Bela krajina wooden houses and the information centre as the entry point to the park and by modernising the educational trail with interpretation tools.

Fund: EAFRD

Status of the project: in progress.

NETWORK OF LOCAL PROVIDERS OF TREATS FROM RURAL AREAS

The partners of the project 'Network of Local Providers of Treats from Rural Areas' will connect providers in the area of LAG Dolenjska and Bela krajina. Connected providers will be promoted via the online portal Direkt s kmetije, social networks and a mobile application that will direct consumers to individual points of sale in urban centres. Providers will be motivated by training in cooperation in sales and purchasing. Partners in the network of providers are expected to cooperate in cross promotion, enhancing the provision of products and services at individual points of sale.

Fund: ERDF

Status of the project: in progress.

LEARNING AND EXERCISING FOR THE ENVIRONMENT

'Learning and Exercising for the Environment' is an important project in the area of the Mirna Valley, which will be used to ensure new common areas and the implementation of new activities for vulnerable groups. The main purpose is to encourage people to exercise more in nature, intergenerational socialising and greater social inclusion of vulnerable groups, and education on the significance of environmental protection, reducing the influence of climate change, and coexistence with nature. Within the scope of the project, small-scale investments in four areas will be made (outdoor classroom, pump track, course for motor skills for vulnerable groups, Russian bowling).

Fund: EAFRD

Status of the project: in progress.

19 LAG of Upper Savinja and Šalek Valley

(Slovenian: LAS Zgornje Savinjske in Šaleške doline)



LAS Zgornje Savinjske in Šaleške doline

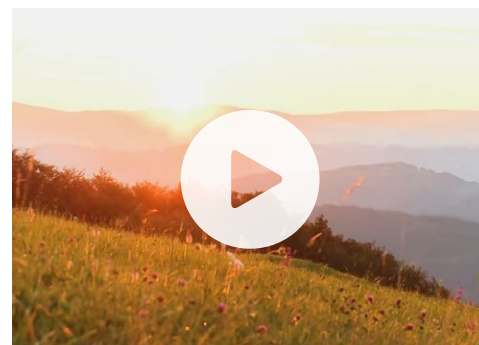
Foršt 51

3333 Ljubno ob Savinji

+386 (0)3 838 10 78



Lead partner of the LAG:
**Savinja, zavod za razvoj
podeželja in turizma**



The LAG of Upper Savinja and Šalek Valley comprises the areas of ten municipalities: Gornji Grad, Ljubno, Luče, Velenje, Mozirje, Nazarje, Rečica ob Savinji, Solčava, Šmartno ob Paki and Šoštanj. The Upper Savinja and Šalek Valleys complement each other perfectly with their appearances, providing guests with everything they may want. From great cuisine, tradition and cultural heritage to natural heritage and relaxing activities in nature in every season. The greatest natural gem in the area is the Logar Valley, one of the most beautiful glacial valleys in Europe, stretching into the Kamnik and Savinja Alps. Both valley are also home to numerous natural sights that are worth visiting. The rich cultural heritage is equal to the natural heritage. Local people preserve the traditions and rich cultural heritage of the area with numerous events. Every municipality in the area hosts traditional events which are very popular among local residents and visitors. One of the most well-known events is the traditional Rafter's Ball in Ljubno.

The area of the LAG of Upper Savinja and Šalek Valley with its valleys, rivers, forests, culture, people, food, events provide visitors with a mixed break, from adrenaline-filled sports to relaxing in nature and cultural activities.

Funded by: EAFRD and ERDF

Leading fund: EAFRD

Objectives of the LDS:

- To create entrepreneurial opportunities to increase the dynamics of entrepreneurship.
- To improve living conditions in the local environment.
- To preserve the level of environmental protection and improve the sustainable use of natural resources.
- To increase the employability and entrepreneurial drive of young people.
- To enhance the social network.

Projects of the LAG:

INTEGRAL TOURIST PRODUCT OF HERBAL HERITAGE

The operation 'Integral Tourist Product of Herbal Heritage' is a cooperative activity involving six Slovenian LAGs. The purpose of the operation is to convert unused potential of extreme biodiversity and traditional knowledge of herbalism into an opportunity for development. In the area of this LAG, the Festival of Herbs of the Upper Savinja and Šalek valleys will be held within the operation in order to establish a traditional event that brings together herbalists from the whole area and gives visitors an additional product.

Fund: EAFRD

Status of the project: in progress.

NEW CHALLENGES FOR SLOVENIAN SHEEP AND GOATS

The operation 'New Challenges for Slovenian Sheep and Goats' is a cooperative activity that includes four Slovenian LAGs. The operation covers an area where sheep and goats are bred, and the use of animal materials and their processing into products with added value. The activities stem from needs recognised in practice and problems for further development efforts regarding sheep and goats.

Fund: EAFRD

Status of the project: in progress.

FESTIVAL OF LOCAL FLAVOURS AND TRADITION

The cooperative activity 'Festival of Local Flavours and Tradition' includes two Slovenian LAGs, whose purpose is to connect local traditional events that preserve the cultural heritage of the area into a single festival. The final objective of the operation is to connect as many events from the areas of the participating LAGs and other areas in Slovenia as possible into a festival.

Fund: EAFRD

Status of the project: in progress.

INTERACTIVE TOURISM FOR ALL

This is a cooperative activity of six Slovenian LAGs. In 2019, the LAG of Upper Savinja and Šalek Valley will renovate the Rafter's Collection in Ljubno ob Savinji to prepare a simulation of rafting down the Savinja River on wooden rafts with the method of video projection mapping in combination with machine vision, which reacts to movements and touch.

Fund: EAFRD

Status of the project: in progress.

20 LAG For Community-Initiative-Lineage

(Slovenian: LAS s CILjem)



📍 LAS s CILjem

Mestni trg 1
5280 Idrija

☎ + 386 (0)5 37 43 914



🤝 Lead partner of the LAG:
**Idrijsko-Cerkljanska razvojna
agencija d.o.o. Idrija**



The area of LAG For Community-Initiative-Lineage comprises the municipalities of Cerklje na Gorenjskem, Idrija and Logatec. The area is rich in natural and cultural heritage. We should initially mention the heritage of the mercury mine in Idrija, which is on the UNESCO World Heritage list, and Idrija lace and Idrija žlikrofi. The heritage of the war and interwar periods has been preserved; the Rapallo border, the Rupnik Line and the Alpine Wall are located in this area. War monuments include the Slovenia Partisan Printing Shop and the Franja Partisan Hospital, which holds a European Heritage Label. The Shrovetide custom "Laufarija Festival" has been preserved in Cerkljansko. A special feature of Shrovetide characters of "laufarji" are their masks carved out of linden wood – "larfe".

This LAG is also interesting because of the Divje Babe archaeological site in Šebrelje, where the oldest musical instrument in the world was found, and preserved dinosaur footprints near Medvedje Brdo.

Its unique flora and natural heritage, which is largely due to the geological fault in Idrija. The area near Logatec is rich in karst phenomena, including karst caves. Another important part of the natural heritage are Zgornja Idrijca Natural Park and Idrija Geopark, and a large portion of the area is protected as a Natura 2000 site.

The area of LAG For Community-Initiative-Lineage is home to quite a few locally typical crops and products. Protection has been obtained by Idrija žlikrofi, Šebrelje stuffed pork stomach and Idrija lace. Craftsmanship is well developed, particularly in wood products. Towns are home to well-visited markets with local produce, and you can taste local cuisine at tourist farms and certain restaurants.

Sports enthusiasts can ski on the slopes in Cerklje na Gorenjskem, on Javornik and Črni Vrh, which are renowned in Slovenia for their quality. There are well-maintained cross-country skiing trails in Logatec and Vojsko. Hiking, cycling (bike parks on Mt. Javornik and in Cerklje na Gorenjskem); fishing and caving are also well developed, and you can visit a spa in Cerklje na Gorenjskem.

Funded by: EAFRD and ERDF

Leading fund: ERDF

Objectives of the LDS:

- To establish conditions for creating jobs.
- To provide new jobs in the area of the LDS.
- To preserve and revive the heritage of the area.

- To develop and devise new tourist products and services.
- To activate the potential of vulnerable groups.
- To preserve, protect and suitably use natural resources.
- To raise the quality of life in rural areas.

Projects of the LAG:

LET'S MEET AT THE MARKET – JOINT MARKETING OF LOCAL PRODUCTS CERKNO–IDRIJA–LOGATEC

The main purpose of the project is to contribute to establishing conditions for creating new jobs. This will be achieved with work over several years to design, develop and promote local products, connecting providers, and motivating, mentoring and regularly training new providers, and in organising various promotional events, joint promotional activities, seeking a single manager for all three markets, etc.

Fund: ERDF

Status of the project: in progress.

IDRIJA–CERKNO–LOGATEC FORMICA

The main reason for the project is to create new jobs and establish conditions for new jobs, and promote entrepreneurial initiative and entrepreneurship in the area of all three municipalities.

Work with interested individuals, the start of co-working in a dedicated place, the mentorship of potential entrepreneurs and users of space, special advisory services, the organisation of general training in entrepreneurship for users and others, and the implementation of joint promotional activities were carried out.

Both projects will continue throughout the programming period. LAG For Community-Initiative-Lineage predicted one job in joint marketing and two jobs in the establishment and operation of co-working; jobs will have been realised by the end of the programming period.

Fund: ERDF

Status of the project: in progress.

21 **LAG Notranjska** (Slovenian: LAS Notranjska)



LAS Notranjska
Prečna ulica 1
6257 Pivka

+386 (0)5 721 22 44, 34



Lead partner of the LAG:
RRA Zeleni kras, d.o.o.



LAG Notranjska comprises the municipalities of Bloke, Cerknica and Loška dolina. Mighty forests with free birds and proud carnivores, rich karst phenomena, a meeting place with a breath-taking underground and rich cultural heritage – this is Notranjska.

The Cerknica region is said to be a land where witches bewitched nature. Lake Cerknica is one of the largest intermittent lakes in Europe. It has completely different faces in different seasons; sometimes it is flooded, while at other times, it is dry. We can also thank the magical karst world for the “museum” of karst phenomena in the Rakov Škocjan Valley and the world-famous Križna Cave. It is characterised by 47 underground lakes with sinter barriers over which crystal clear water runs. The most popular events include the Shrovetide carnival, during which lake creatures are presented at exactly 12.32 p.m. on Shrove Sunday.

Bloke, Slovenia’s Tibet, with six months’ winter and six months’ cold, is known for skiing, which was mentioned by Janez Vajkard Valvazor over 300 years ago. The Bloke Skier Museum is dedicated to the life of people of Bloke. From early spring to late autumn, this plateau invites active people to visit it. You can go on the 20-kilometre-long Krpan Trail rich in heritage, or enjoy swimming, ice-skating, fishing in Lake Bloke or pampering at the glamping park by the lake.

The Lož Valley is surrounded by extensive forests which comprise the largest dense and unpopulated forest area in Central Europe. These forests are also the habitat of wolf, lynx and brown bear, which can be seen by visitors during an organised photo-hunt. The highlight of the cultural heritage is Snežnik Castle. The image of a white castle reflected in an idyllic pond rarely leaves anyone indifferent. The surroundings of the castle are also full of magic, which comes to life during numerous cultural events. The Hunting Collection and Dormouse Museum are located nearby.

Funded by: EAFRD and ERDF
Leading fund: ERDF

Objectives of the LDS:

- To increase innovative entrepreneurial activities in rural areas.
- To preserve the environment and nature.
- More intensive intergenerational cooperation.
- To develop basic services to provide a high quality of life in the area.
- To connect and organise products and services in the area for a joint presentation in the market.

- Greater social inclusion.
- Better awareness of residents in the area of environmental protection and nature conservation.

Projects of the LAG:

LAKE CERKNICA PRODUCT

The project 'Lake Cerknica Product' contributes to resolving the problems of poor connections between tourist products and services, and poor promotion and recognisability of the area of the LAG as a destination. The basis of the modernisation of the innovative sustainable tourist product is the unique natural and cultural heritage of Lake Cerknica. The product facilitates learning about the natural sight of Lake Cerknica in different ways, with an emphasis on education (karst phenomena, flora, fauna, geology), active exploration by bicycle or boat, special programmes (ice-skating on the frozen lake like in the old days). All project partners are interested in upgrading and improving their services, and combining them into a permanent integral product with special original themes and elements related to the Lake. Various programmes of the product have been devised; they depend on the season, the state of the lake and manner of visit available throughout the year (deseasonalisation). More at: www.notranjska.com

Fund: EAFRD

Status of the project: completed.

NEW CHALLENGES FOR SLOVENIAN SHEEP AND GOATS

The underlying theme of the cooperation project of the LAG 'New Challenges for Slovenian Sheep and Goats' running between January 2018 and November 2019 is sheep and goat wool; in the area of the LAG, they would like to convert wool from waste into material used in agriculture and other craft activities. As a natural material with many positive characteristics, it poses, in addition to existing traditional products, modern design challenges, which will be promoted within the operation with various modes of processing, equipment purchases, and connections between craftsmen and designers, as well as joint appearances and presentations at events. The options and opportunities wool provides will be presented within the scope of the

project at workshops for breeders and gardeners, and workshops on the processing of wool and the manufacture of innovative products from wool.

Fund: EAFRD

Status of the project: in progress.

TOGETHER WE CAN DO MORE

The purpose of the project 'Together We Can Do More' is to develop products and services for physically disabled and older persons. Adapted recumbent bicycles that operate independently or connected to form a chain will enable visitors with various problems (physically disabled, deaf, older persons) to ride bicycles. New tourist products for physically disabled persons will be developed, Cycling routes will be planned and mapped, and entered into an application for cyclists, which works as a guide on the planned route. A new product, i.e. adapted yoga, has been developed for older people. These activities and new products and services will activate members of vulnerable groups to live more actively and be more socially included. The project's activities also affect the specific objective "To improve the economy of the community in the area of this LAG", as we upgraded accessible tourism products and services by developing new products for adapted cycling for persons with special needs and older persons. Through this partnership, we have also been enhancing the recognisability of the area as a wheelchair-accessible tourist destination.

Fund: ERDF

Status of the project: completed.

22 LAG Gorenjska košarica

(Slovenian: LAS Gorenjska košarica)

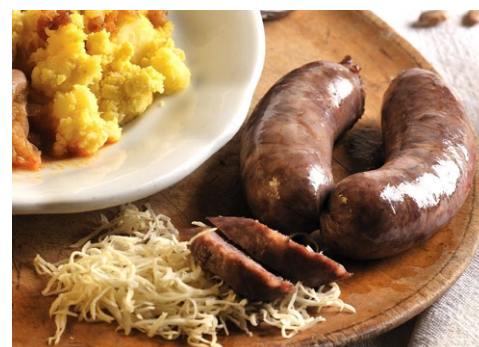
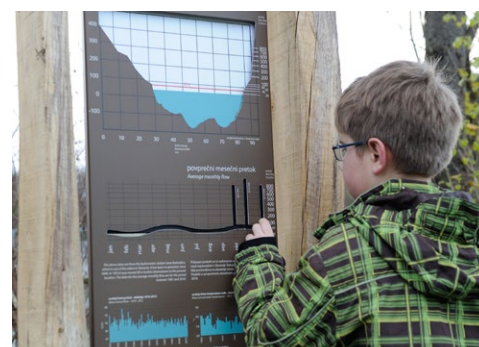


LAS Gorenjska košarica
Cesta Staneta Žagarja 37
4000 Kranj

+ 386 (0)4 281 72 30



Lead partner of the LAG:
BSC, poslovno podporni center, d.o.o.



The area of LAG Gorenjska košarica is located in north-western Slovenia, and comprises the central and northern parts of the Gorenjska statistical region. The area borders Austria (Koroška) to the north, Italy (Friuli-Venezia Giulia) and the Goriška development region to the west, and the Škofja Loka area (part of the Gorenjska statistical region) to the south, while it opens to Central Slovenia to the south-east. The area of the LAG consists of 14 municipalities of Central and Upper Gorenjska: Bled, Bohinj, Cerklje na Gorenjskem, Gorje, Jesenice, Jezersko, Kranj, Kranjska Gora, Naklo, Preddvor, Radovljica, Šenčur, Tržič and Žirovnica. The municipalities form a geographical unit: the alpine world of mountains with valleys and plains with numerous common natural and social geographic characteristics.

Gorenjska and the airport are in the heart of the region and easily accessible from all European capitals, and only a few hours' drive from European urban centres.

Triglav National Park and thousands of its natural and cultural valuable features and the highest Slovenian mountain is the largest and oldest area of protected nature.

The Karavanke with vantage ridges above green pastures, the Kamnik and Savinja Alps with surprisingly steep slopes, and pre-Alpine hills with easily accessible peaks.

Lake Bled, with the island, the large Lake Bohinj and the famous Seven Lakes Valley in the Triglav National Park are among the most well-known lakes.

The sports and tourist centre of alpine skiing champions is located in the fairy-tale land of Kranjska Gora. Its special features and paths are watched over by the Heathen Maiden.

Cross the moat, and among museums and galleries in the medieval town of Radovljica listen to the buzzing of bees and the most famous Alpine dance song.

On one of the most beautiful mountain pastures in Jezersko, above a heart-shaped lake and not far from a magnesium water spring, you can be a shepherd of special sheep.

The easily accessible Krvavec Mountain near the capital of Slovenia attracts skiers in winter and hikers in summer.

In Kranj, the town of Prešeren, above the wild river canyon and with underground passages, your eyes will light up when you see the jewels from the golden age of Carnium.

In Tržič, the only town in Europe, where metal window shutters used to be mandatory, surprising stories were provided by a famous army leader.

In Jesenice, a town of steel, daffodils and ice hockey, let yourself be seduced by reflections of steel and stories of the past. Travel through time below a plateau of white daffodils.

Funded by: EAFRD, EMFF and ERDF
Leading fund: EAFRD

Objectives of the LDS:

- To utilise local potential to develop dynamic competitive entrepreneurship.
- To promote the development of entrepreneurial culture and the job creation.
- To ensure basic services to preserve and raise the quality of life.
- To prepare approaches for the long-term preservation of identity, cultural heritage, the typical appearance of settlements and sustainable development of the typical landscape.
- To reduce environmental pollution by developing sustainable mobility, energy efficiency and the use of renewable energy sources.
- To develop and reactivate brownfield and abandoned areas and add new content.
- To ensure natural heritage, habitats and biodiversity are preserved and developed.
- To prepare programmes of inclusion for vulnerable groups, and utilise local potential to reduce poverty and social exclusion.

Projects of the LAG:

CHILDREN'S PLAYGROUND

Within the scope of the projects 'Children's Playgrounds', 33 playgrounds for children were set up in the area of LAG Gorenjska košarica. The establishment of a network

of new playgrounds for children has made village life richer, the living standard of residents higher, and children's leisure time more active.

Fund: EAFRD

Status of the project: completed.

WHAT'S YOUR HOUSE CALLED?

House names are part of living cultural heritage which has been preserved, changed and also lost between generations. To capture this characteristic of Slovenian homes, explore it in terms of language and mark it, people in Gorenjska started a series of projects of Old House Names.

Over 8,000 old house names were collected within the scope of the projects, a collection of booklets entitled »What's Your House Called« was published and over 4,500 homesteads were marked with their old house names. The portal www.hisnaimena.si was also devised, which includes an online lexicon of house names in Gorenjska.

Fund: EAFRD

Status of the project: completed.

THEMED TRAILS

Within the scope of its projects, LAG Gorenjska košarica equipped 11 thematic hiking trails in its area.

The projects are innovative, as thematic trails were established in rural areas where there had previously been none. The projects' added value also lies in the informative material that was prepared (leaflets).

At the same time, LAG Gorenjska košarica devised a portal at www.odkrijgorenjsko.si, which includes information on all the thematic trails in the area of LAG Gorenjska košarica.

Fund: EAFRD

Status of the project: completed.

23 LAG Ovtar Slovenske gorice

(Slovenian: LAS Ovtar Slovenskih goric)



LAS Ovtar Slovenskih goric
Trg osvoboditve 9
2330 Lenart v Slovenskih goricah

+ 386 (0)5 9128 773



Lead partner of the LAG:
Razvojna agencija Slovenske gorice, d.o.o.



VIDEO



TABLE OF CONTENTS >

MAP >

Invited by Slovenske gorice – simply beautiful

Hills and hills, and in between,
valleys, meadows, forests, orchards and fields,
wine hills, wine hills, wine hills.

*Here, we all are one: Earth and man,
God and birds, trees and mills, and our wine hills.
(Stanko Janežič, Our Landscape)*

The picturesque hilly landscape of Slovenske gorice with dispersed settlements on low ridges and hills, scattered from north-west to south-east, is formed around numerous churches in the form of small clustered villages and market centres: St Anna, St Anton, St Benedict, St Jacob, St Giles, St Martin, St George, St Lenart, St Rupert, Holy Trinity and Three Wise Men. At least two of them are worth visiting, and both of them are pilgrimage churches: the late Gothic Church of Three Wise Men and the large Baroque Church of the Holy Trinity with a Franciscan monastery. The Mura and Pesnica rivers and numerous lakes (Pernica, Pristava, Komarnik, Radehova and Trojica) make for a special landscape and unimagined opportunities for recreation, connections and tourist potential.

Areas where wine and fruit are produced are connected with hiking and thematic trails, and cycling routes. As you meander around the hills and valleys, you can stop at wineries, and organic, tourist and excursion farms. Friendly local people will sell you top wines, excellent homemade food, pumpkin seed oil, dried fruit, honey products and genuine gibanica from Slovenske gorice. In the midst of pristine nature, flowering fields, orchards, vineyards and forests, authenticity and friendliness are preserved, along with birdsong and healthy homemade food.

The character of Ovtar is alive again... Ovtar from Slovenske gorice used to guard vineyards, people and their products; he was a respected gentleman, and his part-time work was highly valued. Today, Ovtar is a locally protected brand from Slovenske gorice, which represents and markets products in the network of Ovtar's products and services.

LAG Ovtar Slovenske gorice comprises the municipalities of Benedikt, Cerkevnik, Duplek, Lenart, Pesnica, Sveta Ana, Sveta Trojica v Slovenskih goricah, Sveti Andraž v Slovenskih goricah, Sveti Jurij v Slovenskih goricah and Šentilj.

*Funded by: EAFRD and ERDF
Leading fund: EAFRD*

Objectives of the LDS:

- To create sustainable jobs by activating local potential.
- Innovative approaches, new products and services in the area of this LAG.
- Start up and diversification of activities for businesses.
- To protect the environment, and preserve valuable natural features and cultural heritage.
- To strengthen integral solutions for social and intergenerational inclusion, remove architectural access barriers and protect health.

Projects of the LAG:

AROUND SLOVENSKE GORICE ON ELECTRIC BIKES (E-BIKES)

By purchasing electric bikes and pertaining equipment for transport, tourists will be able to visit several providers in the area of LAG Ovtar Slovenske gorice and will no longer be limited to short distances of, for example, one municipality. The added value of services is their innovativeness, which means that bicycles may be delivered to guests anywhere in Slovenske gorice, or guests and bicycles are picked up if they want to proceed in any other way. Guests will use green energy bicycles. Comprehensive innovative tourist services keep guests in the area of the LAG, where they can discover new providers and return to the destination. Innovative products and services will enable Slovenske gorice to become more attractive for guests; they will experience wandering around the area in contact with pristine nature, and they will buy more with purchases of recognisable local products from the area of this LAG.

Fund: EAFRD

Status of the project: completed.

ESTABLISHMENT OF THE GRAMOZNICA RECREATIONAL CENTRE IN ZGORNJI DUPEK IN THE MUNICIPALITY OF DUPEK (GRAMOZNICA RC)

The implementation of the operation is related to a product that came to life in Zgornji Duplek in May 2017, i.e. water skiing. The said activity together with the maintenance of the area of the gravel pit includes infrastructure, such as a car park for the needs of water skiing and a camper stop, the arrangement of a walking trail and a park to improve motor skills. Along with events, they constitute the establishment of a

recreational centre where humanitarian, recreational, sports, societal and cultural activities intended for all age groups will be held. Due to the lack of awareness of preserving tradition, a centre for raising awareness of the rafting tradition and rancarija (boating), and of the significance of preserving tradition and cultural and technical heritage protection particularly of young generations will be established in the area.

Fund: EAFRD

Status of the project: in progress.

24 LAG Zasavje Partnership

(Slovenian: Partnerstvo LAS Zasavje)



Partnerstvo LAS Zasavje

Cesta 1. maja 83
1430 Hrastnik

+ 386 (0)3 563 29 60



Lead partner of the LAG:
**Območna obrtno-podjetniška
zbornica Hrastnik**



If someone mentions Zasavje, many people first think of miners and a hundred-year mining tradition which filled people in Zasavje with the will to work and a free spirit, which they use even today to move the boundaries of the unfinished and seemingly unreachable. But Zasavje is more than just a 'slag heap' of mining and a declining economy. It is a region that attracts people with its history, wonderful yet undiscovered nature and, above all, the friendliness of the people, who see a friend in every visitor. LAG Zasavje partnership comprises the municipalities of Hrastnik, Trbovlje and Zagorje ob Savi.

Mountaineering lovers will find an abundance of mountain pleasures in Zasavje and its mountain huts, which found their place at pretty vantage points (Kal, Kopitnik, Gore, Mrzlica, Kum, Zasavska Sveta Gora, Čemšeniška planina, etc.); on some of them (Mrzlica, Kum), you can walk in the stunning nature of a landscape park within a Natura 2000 area.

Guided tours of glass production at Steklarna Hrastnik, tours of the Trbovlje–Hrastnik Mine and the Mining Museum in Zagorje, and a modern tour of mining in the 4th DRITL (Virtual Museum of Coal Mining) and a miner's flat in Njiva in Trbovlje will give you an insight into the rich industrial and cultural heritage.

The dynamic relief and sports infrastructure of Zasavje facilitate numerous recreational and adrenaline-filled sports activities: mountain biking, rafting on the Sava River, parachuting, climbing, etc. The Europark recreational area in the Municipality of Zagorje ob Savi facilitates the use of well-maintained walking trails, outdoor gym, and the take-off of sports aircraft from the nearby Ruardi airfield.

In the area of Velike skale above Kisovec, you can also see the only karst cave in this area, i.e. Štangovc Karst Cave.

All of the aforementioned is just a fragment of what Zasavje offers to curious tourists or random visitors, since Zasavje's real wealth lies in the wit, kind-heartedness and hospitality of its people. So put your shoes on and hurry to the heart of Slovenia.

Funded by: EAFRD and ERDF

Leading fund: ERDF

Objectives of the LDS:

- To strengthen and increase entrepreneurial activities by using the region's local potential.
- To promote active cooperation and establish new partnerships.
- To boost innovation and creativity.
- To increase the added value of local products and services.
- To raise the quality of life.
- To establish and improve tourist products, develop accommodation facilities, and promote tourist activities based on local attractions.
- To improve the state of the environment and introduce new activities to adapt to climate change.
- Greater recognisability of valuable natural features.
- To increase and promote the active inclusion of various groups into social life.

Projects of the LAG:

TOURIST INFORMATION CENTRE HRASTNIK

The operation is funded by the EAFRD. The Hrastnik Cultural and Recreational Centre is the operator of the Hrastnik Museum, which will be home to the new Touristic Information Centre. The operation, which also resulted in one new job, will be carried out in two stages, and individual activities will be carried out in all three municipalities in Zasavje, which will guarantee regional coverage of the area of the LAG. The objective of the operation is to promote the development of tourism and tourist products and services at local and regional levels, encourage learning about regional tangible and intangible cultural and natural heritage, and to boost intergenerational socialising and connections between people. A great deal of attention is also paid to vulnerable groups in the local environment through various activities.

Fund: EAFRD

Status of the project: in progress.

REVITALISATION OF THE VILLAGE SCHOOL IN TIRNA, AND ACTIVATION OF YOUNG PEOPLE AND WOMEN AND OF THE INTERGENERATIONAL GROUP AS A VULNERABLE GROUP IN THE VILLAGE

Within the operation, the reconstruction and modernisation of existing infrastructure, and the rearrangement of space in the old school will foster active socialising of several generations and the organisation of various events. The preparation and implementation of different programmes will raise the quality of life of villagers in Tirna Local Community and local guests. The existing unsuitable septic tank will be carried out and a biological wastewater treatment plant will be set up within the operation, which will constitute ecological rehabilitation of the building and contribution to the clean environment.

Fund: EAFRD

Status of the project: completed.

REVIVING THE CARPENTRY TRADITION IN ZASAVJE

The operation is being carried out in the Municipality of Trbovlje, most of which is urban, which is why it is funded by the ERDF. The subject of the operation is the purchase of a new machine for the company to increase its production capacity and expand its options to produce high-quality furniture. Resulting from the purchase of a new machine and expansion of existing activity, a new job will be created within the operation for a carpenter who will be trained to work with the newly purchased machine. Various vulnerable groups (young people, unemployed) will be included in the operation through support activities, and promotional activities to enhance the significance of sustainable use of wood resources in general will also be carried out through education processes at secondary schools in Zasavje.

Fund: ERDF

Status of the project: completed.



LAS UE ORMOŽ

25 LAG Administrative Unit Ormož

(Slovenian: LAS UE Ormož)



LAS UE Ormož

Vrazova ulica 9
2270 Ormož

+ 386 (0)2 741 53 52



Lead partner of the LAG:
Javna razvojna agencija Občine Ormož



TABLE OF CONTENTS >

MAP >

LAG Administrative Unit Ormož comprises three municipalities (Ormož, Središče ob Dravi, Sveti Tomaž). We could also call it the LAG with the most sunny days, as this area is characterised by plenty of sun, resulting in the thriving of vines, for which the area is most known. Vineyards and hills, and the plain and the Drava River provide this LAG with an interesting appearance and options for diverse experiences. Sports and culinary experiences underpinned by cultural sights will create a special experience in a small area of Prlekija. Ormož, the centre of the LAG, has roots going back thousands of years. In this town, you can visit the Church of St Jacob and the archaeological collections at the museum, or taste wines in one of the largest wine cellars in the country, Puklavec Family Wines. You can stroll around the lagoons of Ormož, where you will notice various birds and even water buffalo. Velika Nedelja is located near Ormož; it has been home to a centre for Teutonic knights for centuries. You can also see museum collections at a medieval castle and the Church of the Holy Trinity, which dates to the 12th century. You can learn about the history of grandparents in Sveti Tomaž by visiting an old compact museum house, and learn about the fragrance of fresh pumpkin seed oil by going to the Središče ob Dravi Oil Mill where you will see all the products made there from oil and pumpkin seeds.

Come to LAG Administrative Unit Ormož, open your heart and follow the sound of wind rattles, which will take you across the hills to wine cellars and among amusing and lively people.

Funded by: EAFRD and ERDF

Leading fund: ERDF

Objectives of the LDS:

- To promote mergers of local partners into innovative partnerships and social entrepreneurship.
- To promote an environment that supports entrepreneurship.
- To support subsidiary activities in agriculture, and promotion and marketing activities.
- To improve conditions for the speedier development of the economy, agriculture and other activities, and raise the quality of life.
- To foster innovative partnerships in environmental protection and nature conservation.
- To boost awareness-raising activities concerning the significance of environmental protection and adaptation to climate change.
- To promote intergenerational cooperation and learning.
- To improve home care for older people.
- To encourage the active inclusion of young people in society.

Projects of the LAG:

PLAN FOR ECONOMIC DEVELOPMENT AND RAISING THE QUALITY OF LIFE IN THE AREA OF LAG ADMINISTRATIVE UNIT ORMOŽ 2017–2025

The project is co-financed by the EAFRD. It may be divided into three major sets. The practical part, the establishment of markets and camper stops, and the theoretical part, numerous workshops aimed at promoting the development of the economy and agriculture. The basis of the project is sustainable development that does not put pressure on the environment or nature. It will speed up joint promotion and marketing based on a collective brand and target markets. The project commenced in March 2018.

Fund: EAFRD

Status of the project: in progress.

INTERMUNICIPAL–INTERGENERATIONAL CENTRE, OPPORTUNITY FOR INTERGENERATIONAL INTEGRATION

By establishing an innovative partnership in the public and business sectors, this project provides assistance to vulnerable groups. It will help participants in the operation to strengthen self-esteem, respect, understanding, tolerance and solidarity through intergenerational integration. The purpose of the project is to inform residents about how to take care of their own health, particularly mental health, and raise their awareness thereof. Options for support and assistance for the said groups are sought with a survey of the needs of vulnerable target groups.

Fund: ERDF

Status of the project: in progress.



26 TOTI LAG

(Slovenian: TOTI LAS)



TOTI LAS
Pobreška cesta 20
2000 Maribor

+386 (0)2 333 13 11



Lead partner of the LAG:
Mariborska razvojna agencija p.o.



TABLE OF CONTENTS >

MAP >

The fertile municipalities of Maribor and Kungota, known for wine, fruit and hospitality, are located between Slovenske gorice and Pohorje. The territory is divided by the Drava River, whose energy connects and also separates hills and valleys. This part of Central Europe, to which you are cordially invited, lies at the crossroads of the Alpine and Pannonian worlds. This results in pleasant climate conditions, with plenty of sun and short winters, favourable to local people and their land.

The Municipality of Kungota lies in the hills of the western part of Slovenske gorice, in a world of famous wines, soothing sun and gentle morning mist. Visitors will be served good wine and a snack of homemade food. The hilly and dynamic landscape is perfect for nature lovers, as it tempts them to take a walk in it (Vinotour, <https://www.facebook.com/vinonw/>) or cycle and enjoy the fresh air, and stop in a pleasant restaurant, wine cellar, vantage point (Plač Tower) or tourist farm. It is also home to the famous "heart among vineyards". Be careful not to get dizzy from all the magnificent views.

Maribor has always enjoyed the status of the centre of Štajerska in Slovenia, This is connected with the former castle on Piramida Hill, which is definitely worth visiting. Attentive visitors will notice that three important Central European geographic units meet in the surroundings of Maribor: Pohorje (Golden Fox), which meets the Drava Plain and is a bridge to extensive lowlands called Pannonia. The mountainous Drava River becomes a lowland watercourse, and Slovenske gorice, whose greatest gifts are wine, the oldest vine in the world (<https://www.staratrt.si/>) and equally delicious fruit, make everything into a whole, as in a natural fairy tale. One of the most important events in Maribor is the Lent Festival (<https://www.festival-lent.si/>).

Funded by: EAFRD and ERDF
Leading fund: EAFRD

Objectives of the LDS:

- To support speedier development of entrepreneurship (including social entrepreneurship) and the creation of new (green) jobs.
- To enhance connections and networking between local development stakeholders in urban and rural areas.
- To establish and modernise local infrastructure, and develop services to raise the quality of life and quality spending of leisure time.
- To boost local self-sufficiency and develop additional activities in rural areas.

- To raise residents' awareness of environmental protection, natural heritage preservation and the sustainable use of natural resources.
- To modernise small local infrastructure, which contributes to environmental protection and nature conservation.
- To enhance the social inclusion of vulnerable target groups.
- To improve access to diverse services and programmes for active ageing and a healthy lifestyle.

Projects of the LAG:

EXPERIENCE FARM FOR A HEALTHY LIFESTYLE

The applicant of the operation, Bogdan Mak, has been successfully running the experience and organic farm Sončni raj, where herbs and crops are produced and processed. Two years ago, he began reviving an abandoned farm with a unique approach and hard work.

They use activities within the operation to upgrade existing products and services of the farm, provide locals with new options to spend leisure time in nature, experience nature and biodiversity first hand, raise awareness of the significance of the sustainable ecosystemic production of high-quality food, and promote a healthy and active lifestyle.

They respect tradition, and a healthy lifestyle and environment, and live in harmony with nature. They pay a great deal of attention to genuine and close cooperation with their visitors. The Sončni raj experience farm is a venue for active and spiritually rich life on the farm.

Fund: EAFRD

Status of the project: in progress.

MERRY DECEMBER

The operation 'Merry December' brings an interesting and diverse programme to local residents in festive December. Streets in the centre of Zgornja Kungota were made festive with ornaments, interesting programme and huts where local providers presented their diverse products.

By constructing a trade show venue and holding the Merry December event, together with rich social activities, the municipality provided another option for socialising based particularly on the inclusion of older people and other vulnerable groups, which promotes intergenerational cooperation.

Fund: ERDF

Status of the project: completed.

HEALTH COMES FIRST

An outdoor gym and a pump track are two important acquisitions of the Municipality of Kungota, which, in cooperation with various societies, promotes a healthy lifestyle and active spending of leisure time. The operation has added to the already rich content of the existing sports area near the primary school. A modern sports park was thus established for sports and learning activities, outdoor socialising, recreation, intergenerational integration, information, fun and relaxation. The equipped surfaces are open to all who wish to co-create a friendly community for people of all ages by connecting and participating.

Fund: ERDF

Status of the project: completed.



27 LAG Lower Savinja Valley

(Slovenian: LAS Spodnje Savinjske doline)



LAS Spodnje Savinjske doline
Ulica heroja Staneta 3
3310 Žalec

+ 386 (0)3 713 68 66



Lead partner of the LAG:
Razvojna agencija Savinja



LAG Lower Savinja Valley connects six municipalities: Braslovče, Polzela, Prebold, Tabor, Vransko and Žalec.

The symbol of the Lower Savinja Valley is hops, for which the valley is most known; if you visit this area, you will find yourself in the midst of the magical Green Gold Valley.

You are warmly invited to interesting places, where you will be fascinated with tradition, local cuisine, the homeliness of your stay and meetings with friendly hosts, in addition to natural beauty and rich natural and cultural heritage.

You will see the unique Roman Necropolis, the karst gem of Pekel Cave, the innovative beer fountain, and numerous museums, pristine nature and rich history.

The valley is also home to the Eco-Museum of the Hop-Growing and Brewing Industry in Slovenia, which is located in a reconstructed hop drying facility, and unveils the history and the significance of hop-growing and brewing for the Lower Savinja Valley on four floors.

You can see Žovnek Castle, one of the largest and oldest castles in Slovenia, the home of the counts of Celje; Komenda Castle, which combines a rich history and present and was ruled by the Order of Malta for over 400 years, lies not far away.

Prebold is home to the Prebold Museum Collection, which is dedicated to preserving local cultural heritage.

The Pri Lisjaku Pond and pristine nature attract people to the Municipality of Tabor. An interesting pond in the pleasant idyll of nature features two new hayracks intended for catering while preserving the significance of Slovenian rural architecture.

In Vransko, you can visit the Schwentner House, with fully preserved furniture, where the Slovenian publisher and bookseller Lavoslav Schwentner was born.

Funded by: EAFRD and ERDF
Leading fund: EAFRD

Objectives of the LDS:

- To promote entrepreneurial activities in rural areas.

- To foster innovative connections between local stakeholders for a joint presentation on the market.
- Training to improve the entrepreneurial drive of entrepreneurs, farmers and others engaged in profitable activities.
- To provide infrastructural conditions to raise the quality of life.
- To upgrade existing and develop new programmes to raise the quality of life.
- To preserve and improve the state of nature and the environment.
- To support social connections and inclusion.

Projects of the LAG:

BRINGING THE BREWING TRADITION AND MODERNITY TOGETHER

The objective of the operation is to purchase equipment for a brewery where new brewing products will be developed. The brewery will provide support to entrepreneurs involved in brewing. At the same time, it will be used as a learning and demonstration centre. It will enable local tourist societies to brew various types of beer based on their ideas.

They will employ a brewing expert, who will be responsible for the transfer of knowledge and information to interested stakeholders. Within the operation, activities to inform and educate tourist and cultural societies as well as tourist guides from the Lower Savinja Valley will be carried out. Slovenian hops will be promoted.

Fund: ERDF

Status of the project: in progress.

FORESTS ARE THE LUNGS OF HELL

Within the operation, the Ponikovski kras thematic educational trail will be revamped, restored and modernised. The trail will be improved, becoming more recognisable, and provide visitors with a richer experience. At numerous activities, workshops and promotional events, visitors will be informed about how to adapt to climate change, why it is important to preserve biodiversity, and the role of various ecosys-

tems and animal species in this. The trail will be more easily accessible to various target groups, particularly to blind and visually impaired persons.

Fund: EAFRD

Status of the project: in progress.

INTEGRAL TOURIST PRODUCT OF HERBAL HERITAGE

The cooperation project between LAGs increases the recognisability of herbalism in the area of this LAG, new entrepreneurial opportunities and more innovative tourist products and services. Workshops and training for guides, producers and sellers are the most visited events.

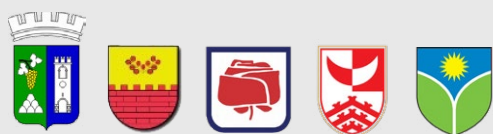
Fund: EAFRD

Status of the project: in progress.



28 LAG Embraced by the Sun

(Slovenian: LAS V objemu sonca)



LAS V objemu sonca
Trg Edvarda Kardelja 3
5000 Nova Gorica

+386 (0)5 330 66 81



Lead partner of the LAG:
RRA Severne Primorske d.o.o.
Nova Gorica



[TABLE OF CONTENTS >](#)

[MAP >](#)

The area of LAG Embraced by the Sun is located in Goriška, a sunny region in the far west of Slovenia. The areas of the municipalities of Brda, Nova Gorica, Miren-Kostanjevica, Renče-Vogrsko and Šempeter-Vrtojba bring together the beauty of hilly Brda, part of the fertile lowland Vipava Valley, Banjšice and Trnovo Forest plateaus, and part of the stony Karst. The area is completed by the emerald Soča River and the green Vipava River. The area is home to pristine natural gems, and rich historical, cultural and technical heritage.

The heart of Goriška is the young town of Nova Gorica, known as the town of roses, fun and pleasure. Across town, perched on a hilltop, the Kostanjevica Monastery, housing the extensive Škrabec library, and the crypt of the last descendants of the French Bourbon dynasty beckon visitors to make the walk up. The monastery walls are adorned with one of the most complete and largest Bourbon rose collections in the world.

The technical heritage of the area includes the Solkan Bridge over the Soča River located on the Jesenice–Nova Gorica railway line. It is famous for having the longest stone arch in the world and the longest stone arch among railway bridges.

Lovers of cultural heritage can visit Rihemberk Castle, Kromberk Castle, Vila Bartolomei, Dobrovo Castle and Vila Vipolže. A military guard tower in Vrtojba is also interesting, as it is the smallest memorial museum in Slovenia.

The Walk of Peace from the Alps to the Adriatic Sea is dedicated to the memory of numerous victims of World War I. It will take you to the outdoor museum Sabotin Peace Park, the Walk of Peace in the Karst with a memorial in Cerje, and countless caverns, caves, trenches, forts and cemeteries.

In the Paradana Natural Reserve, nature lovers will be attracted by the Big Ice Cave, which is famous for its classical vegetation inversion and eternal ice.

Anyone hungry for an active break can choose between numerous options, such as: cycling, hiking, horseback riding, fishing, kayaking, parachuting, climbing (natural and artificial walls), caving, etc.

The energy of the sun and hard-working locals produce an abundance of juicy cherries, peaches, apricots, olives, figs, chestnuts, etc. Three wine roads meander through the area, i.e. Brda, Vipava and Karst, and offer top wines. In Brda, a special place is held by Rebula as an indigenous wine variety; in the Vipava Valley, you can taste local wines, such as Zelen, Pinela and Pikolit, along with well-known white and red wines, and in the Karst, you can taste Teran. The perfect idyll of the area is completed

by gastronomic delights galore provided by outstanding restaurants, local inns and tourist farms with authentic homemade treats, such as the radicchio from Goriška (sukénski régut in the local dialect), the Vipava Valley and Karst prosciutto, frtalja, various types of minestrone, asparagus and many other superb dishes.

Funded by: EAFRD and ERDF

Leading fund: EAFRD

Objectives of the LDS:

- To foster entrepreneurial drive to enhance employability in rural areas and urban centres.
- To bring together stakeholders in rural areas and urban centres in innovative development partnerships.
- To activate potential to create new services and raise the quality of life.
- To provide conditions to develop new business opportunities of green, cultural and accessible tourism, and other green products and services.
- To preserve valuable natural features, biotic diversity and cultural heritage for the sustainable (tourism) development of the area.
- To promote environmental protection and the sustainable use of natural resources.
- To improve social services and inclusion.
- To promote intergenerational cooperation and ensure quality spending of leisure time.

Projects of the LAG:

ŠTALONI YOUTH CENTRE IN DOBROVO

The purpose of the operation is to establish a new youth centre in Brda. Construction and craft works will be carried out to reconstruct the building which will host the youth centre. This centre will contribute to the expansion of various educational, cultural and leisure time, sports and recreational activities in order to raise the quality of life. Special emphasis will be put on informal education in sustainable farming and tourism. The activities will also include holiday childcare, workshops, courses,

lectures and other activities that might interest residents. Underlying the operation will be the intergenerational element, transfer of knowledge, etc.

Fund: EAFRD

Status of the project: in progress.

CYCLING ON THE BANJŠICE AND TRNOVO FOREST PLATEAUS

The purpose of the operation is to establish a long-term development partnership in cycling tourism in the area of the Banjšice and Trnovo Forest plateaus by establishing a consortium of various stakeholders/organisations that operate in this area. Another purpose of the operation is to enhance tourist products and services by developing a common tourist cycling product for the Banjšice and Trnovo Forest plateaus, and by purchasing e-bikes. The operation will promote the use of electric and regular bicycles, local products and crops, and the sustainable use of natural and cultural heritage.

Fund: EAFRD

Status of the project: in progress.

29 LAG Richness of rural areas along the river Drava and in Slovenske gorice hills

(Slovenian: LAS Bogastvo podeželja ob Dravi in v Slovenskih goricah)



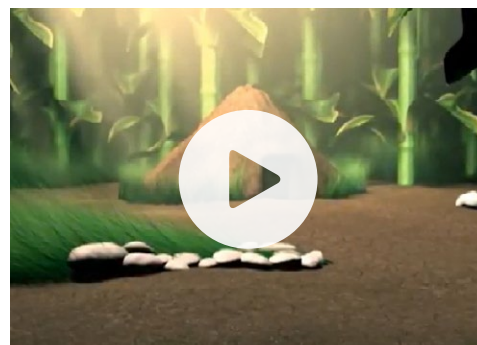
LAS Bogastvo podeželja ob Dravi in v Slovenskih goricah

Ormoška cesta 28
2250 Ptuj

+386 (02) 749 36 33



Lead partner of the LAG:
Društvo Bogastvo podeželja ob Dravi in v Slovenskih goricah



LAG Richness of rural areas along the river Drava and in Slovenske gorice hills connects eight municipalities of Lower Podravje: Destričnik, Dornava, Hajdina, Juršinci, Kidričevo, Markovci, Ptuj and Trnovska vas, where around 28,800 people live in a total area of 311,8 km². The area of this LAG comprises two picturesque and biodiverse natural units, i.e. the Drava Plain and Slovenske gorice, complemented and enriched by numerous historical, cultural and special architectural features. This is a land of superb cuisine, rich tradition and friendly people, the land of Kurenti – Shrovetide characters under UNESCO protection since 2017 – a land where you can experience a carnival atmosphere, a genuine Roman camp with gladiatorial games, where knights will take you back to the Middle Ages (Castle games). Among all the historical and culinary experiences, you cannot overlook the intriguing mysteries of the Ptuj underground, home to the oldest Slovenian wine from 1917 (Golden Vine), and where you are introduced to the world of endless flavours, wonderful wine bouquets and enticing aromas, to which you are invited in Ptuj, a town of thousand treats, wines, mysteries, fragrances and years.

The projects of the LAG, developed together with hard-working local people, societies, companies and municipalities, will take you to the world of rare rocks, minerals and fossils, and one of the largest private collections (Pangaea Museum); you can hitch a ride on a genuine Puch motorcycle, visit Puch's birth place (Puch Museum), learn about typical Pannonian architectural heritage (Simonič and Čušek homesteads), the secrets of red onion production in Ptuj, and the life of vineyard workers, peek into the most beautiful Slovenian Baroque mansion (Dornava Mansion), and learn about life in concentration camps from World War I and II (Kidričevo). Indulge in the appealing flow of the Drava River, observe the natural beauty from the river's surface, hide in the shade of a mighty sequoia, observe the flower of the checkered lily and nesting places of grey herons, stroll around the tranquil Drava River backwaters (Berl Natural Science Trail), explore nature on horseback (Starošince Riding Centre), take it easy and simply enjoy yourself. You can freshen up and rest at the Terme Ptuj Spa thermal pools, sleep in a barrel, and continue exploring by bike across the rolling hills of Slovenske gorice or the endless plain of the Drava and Ptuj plains. The cherry on top of your visit will be excellent cuisine, with the traditional touch of the local restaurants owners. Because LEADER is the people and our LAG is the RICHNESS OF RURAL AREAS.

*Funded by: EAFRD and ERDF
Leading fund: EAFRD*

Objectives of the LDS:

- To promote innovative approaches to developing various forms of entrepreneurship, activate potential, create a supportive environment and create new jobs.
- To foster connections between local development and sectoral stakeholders.
- To support infrastructure development in settlements to raise the quality of life and develop economic activities.
- To develop and introduce innovative programmes with high added value for social development, and shape the identity of the area.
- To improve attitudes to valuable natural features in the area of the LAG and increase their recognisability.
- To promote the use of renewable energy sources and efficient use of energy.
- To promote innovative approaches to protecting the environment and nature.
- To enhance the inclusion of vulnerable groups in social activities in rural areas.

Projects of the LAG:

ROMAN CAMP

Within LEADER 2007–2013, the Poetovio LXIX Society realised the Roman Camp project, which presents rich Roman heritage, and revives the Roman way of life, culture and old Roman crafts in the area of this LAG. The camp is held on the third weekend of August, and attracts a myriad of visitors. Within the scope of the project, the equipment for the events was purchased, such as awnings, Roman soldiers' armour and other clothing required to set up the camp and to authentically present the rich Roman heritage. Would you like to go two thousand years back in time? You are warmly invited to the Roman games on the third weekend in August.

Fund: EAFRD

Status of the project: completed.

RICHNESS OF FLAVOURS OF RURAL AREAS

This is a project in which the culinary heritage of the area of this LAG was explored and recorded. The project saw the active participation of local restaurant owners, who were invited to take part to add traditional menus to the food on offer at their restaurants. Together with hard-working members of a society of rural women,

restaurant owners collected recipes in the field, which were then arranged and adjusted to modern cuisine and the expectations of visitors. Upgraded traditional dishes display plenty of creativity and originality of individual restaurant owners. All recipes are recorded in a book of recipes, which is the original document of rich local cuisine. Do you want to taste the cuisine? Be our guests, and visit restaurants in the area of LAG Richness of rural areas as soon as you can.

Fund: EAFRD

Status of the project: completed.

WILD ANIMAL PARK

The project 'Wild Animal Park' is a project in progress co-financed by the ERDF. The main purposes of the project are to arrange and open the park for visitors, provide information and raise awareness of the significance of protecting endangered animal species, present endangered animals, and to prepare interactive experience programmes through which visitors learn about the life processes and special features of individual animal species. If you want to know what happens in an egg during hatching and how a chick is hatched, or if you would like to know more about various endangered animal species around the world, you are cordially invited to visit the park.

Fund: ERDF

Status of the project: in progress.



30 LAG Prlekija

(Slovenian: LAS Prlekija)



LAS Prlekija
Prešernova ulica 2
9240 Ljutomer

+ 386 (0)2 585 13 40



Lead partner of the LAG:
Prleška razvojna agencija, giz



LAG Prlekija is located in the Pannonian part of Slovenia between the Mura and Drava rivers. It encompasses the areas of eight municipalities (Apače, Gornja Radgona, Križevci, Ljutomer, Radenci, Razkrižje, Sveti Jurij ob Ščavnici and Veržej). The plain area of Prlekija gradually rises to hilly Slovenske gorice, which connects Slovenia with neighbouring Austria and Croatia, as the Mura River does. The area has the most fertile land in the country, most of which is planted with crops. The hilly region features remarkable vineyards, which invite you to taste authentic homemade wines made by hospitable locals.

The area of LAG Prlekija is full of valuable natural features. The lowland flood-prone area on the right bank of the Mura River has the status of a biosphere reserve, and is home to numerous animal and plant species which are endangered elsewhere. The natural biosphere reserves include the landscape parks of Jeruzalem, with excellent white wines, and Radgonsko-Kapelske gorice, with indispensable sparkling wines.

Characteristic of the area between the Mura and Drava rivers is an amazing cultural heritage. The well-preserved centre of Ljutomer invites you to visit the town of the first Slovenian mass meetings, to which a museum is dedicated. Numerous religious buildings are lavishly painted and worth seeing. Veržej is home to the last mill run by the current of the Mura River. The cultural heritage includes a rich folk tradition preserved in customs and traditions, such as Shrovetide carnivals, the setting up of wind rattles and St Martin's Day celebrations, and a living traditional culture is preserved by numerous folklore and cultural societies.

People in Prlekija are proud of their splendid wines and exquisite cuisine. The famous white wines from cellars, wineries, restaurants and open-door farms in Prlekija go best with sophisticated culinary treats made according to traditional recipes. The gibanica from Prlekija, buckwheat fritters and tünka of Prlekija are characteristic of the area.

The sun-soaked region is endowed with healing, thermal and mineral waters and springs, and pristine nature. Most guests go to three thermal and health resorts: Radenci Health Resort, Terme Banovci Spa and Bioterme Mala Nedelja Spa, which boasts a wide range of recreational and health resort services and unforgettable surroundings full of natural, cultural and gastronomic experiences.

The hospitality and friendliness of people from Prlekija are complemented by horse races with Ljutomer trotters, which you can may learn about at a modern museum funded under the LEADER programme. Numerous hiking and cycling options give you an opportunity to take a break in nature and an unforgettable cultural landscape. The treasury of folk and amateur cultural creativity of people in Prlekija at folklore,

music and art gatherings held throughout the year in numerous places in Prlekija is limitless. Welcome to Prlekija.

Funded by: EAFRD and ERDF

Leading fund: EAFRD

Objectives of the LDS:

- To promote and connect local businesses, focusing on tourism.
- To create new products and services in a supportive environment to accelerate entrepreneurship.
- To increase the share of local food in public institutions.
- To increase the number of local products and services.
- To improve conditions to improve the health of residents of the LAG.
- To organise more events and improve access to culture.
- To improve the self-esteem of Prlekija residents.
- To increase the use of renewable energy sources and efficient use of energy.
- To improve the protection of nature and natural resources with ecoremediation.
- To improve the social inclusion of marginalised groups.

Projects of the LAG:

RECREATIONAL OUTDOOR INFRASTRUCTURE – KRIŽEVCI ADVENTURE PARK

The Municipality of Križevci has been arranging a recreational outdoor part near the forest by the sports centre in Boreci. The park's design is based on the comprehensive treatment of forest as a place for gentle forms of recreation, play and relaxation, and at the same time, supports the implementation of learning activities related to the forest ecosystem and ecosystem services. The comprehensive arrangement of the existing forest as a so-called adventure forest promotes intergenerational socialising, and fosters experiences for the body and soul, and is suitable for children and young people, as well as for older recreational enthusiasts and more demanding users.

Fund: EAFRD

Status of the project: completed.

SIMPLY CYCLING SLOVENIA

The project 'Simply Cycling Slovenia' is intended for domestic and foreign tourists, and provides them with "all-inclusive" cycling services. It connects local spas with local food, beverage and accommodation providers. It offers tourists a complete cycling tourist package. Within the scope of the project, bicycles with additional equipment for men, women and children were purchased, and are intended for one or multi-day cycling trips for individual guests and guests of nearby thermal spas. A bicycle carrier for the transport of bicycles was also purchased, providing visitors full support while exploring Prlekija and beyond. The website www.simplycycling-slovenia.com, presents cycling routes, and enables guests to make reservations for bicycles and multi-day superbly guided cycling trips.

Fund: EAFRD

Status of the project: completed.

PERMACULTURAL-BIODYNAMIC GARDEN AT POMURJE FAIR

The permacultural garden at Pomurje Fair is cultivated according to the principles of biodynamics. In addition to the garden, the fair, visited by over 100,000 people each year, promotes an ecohouse made of bales of straw and an outdoor wood-fired oven. During construction, only natural and recycled materials (wood, straw, clay and gravel) were used at numerous practical workshops. The garden shed is the perfect example of how to build a house for high-quality living at low cost with some ingenuity and skilled hands.

Fund: EAFRD

Status of the project: completed.



*LAS Po poteh dediščine od
Turjaka do Kolpe*

31 LAG Heritage Trails from Turjak to Kolpa

(Slovenian: LAS Po poteh dediščine
od Turjaka do Kolpe)



📍 LAS Po poteh dediščine od Turjaka do Kolpe

Trata XIV 6 a
1330 Kočevje

☎ + 386 (0)1 620 84 70



🤝 Lead partner of the LAG:
RC Kočevje Ribnica d.o.o.



The area of this LAG is characterised by its karst appearance, with a high level of nature conservation, many valuable natural features, extraordinary biodiversity, and the presence of rare endangered plant and animal species (bear, wolf, wildcat, lynx). On account of its valuable natural features, people's creativity and activities, social development and events, the area is rich in cultural heritage and has a strong cultural identity.

The area of this LAG comprises the municipalities of Dobropolje, Kočevje, Kostel, Loški potok, Osilnica, Ribnica, Sodražica and Velike Lašče, and stretches from north-west towards south-east:

- the northern part comprises the Municipality of Velike Lašče, where you can see Turjak Castle and Trubar Homestead, the birth place of Primož Trubar, the author of the first Slovenian book, and the Municipality of Dobropolje, famous for Podpeč Cave, the largest cave in Dolenjska and the golden Baroque altars in the Church of St Florian;
- the central part of the LAG comprises the Municipality of Ribnica, famous for the largest ethnographic event in Slovenia, the Ribnica fair of wickerwork and pottery, and for one of the oldest squares in Slovenia; the Municipality of Sodražica, where you can visit the pilgrimage Church of the Assumption of Virgin Mary near Nova štifta and the Kadice Gorge; and the Municipality of Loški Potok, with the Rhaetia karst depression, one of the most beautiful karst depressions in Slovenia, and Tabor, a famous vantage point with amazing views of villages beside the streams in the municipality;
- the southern border of the LAG comprises the borders of the municipalities of Osilnica, Kostel and Kočevje by the Čabranka Valley, which proceeds into the Upper Kolpa Valley, which separates us from our southern neighbour, Croatia: in the Municipality of Kostel, the most important multi-day event is the cultural and ethno-logical event "Tamburanje va Koste" on the occasion of the Assumption of Mary on 15 August, and Kostel Castle, which is a popular tourist spot with magnificent views of the Kolpa River canyon; in the Municipality of Kočevje, which is the largest municipality in Slovenia, you can see the famous forests of Kočevje, Željne Caves, the Škrilj Bunker and Lake Kočevje; the Municipality of Osilnica known as the land of Peter Klepec, which is marked by the Kolpa River which provides visitors with many opportunities to relax and have fun (swimming, fishing, rafting, etc.).

In the area of the LAG, tourist products based on pristine nature offer an abundance of opportunities for active holidays. This is a region with natural and cultural sights which invites you to discover its natural beauty on various hiking, cycling, water and riding routes.

*Funded by: EAFRD and ERDF
Leading fund: EAFRD*

TABLE OF CONTENTS >

MAP >

Objectives of the LDS:

- Well-maintained living environment, higher quality of life, and life in synergy with nature, culture, and local customs and traditions.
- To increase the volume of production, processing and marketing of local farm, forestry and food products by promoting short supply chains.
- To strengthen local identity and awareness of the significance of cultural and natural heritage preservation by educating, restoring, maintaining and preserving the cultural landscape and heritage.
- To promote entrepreneurship, innovation and cooperation between the public, the business and non-governmental sectors to create job opportunities.
- To enhance the recognisability of the tourist destination, and the inclusion of, and connections between, local tourist products and services.
- To preserve the environment for the sustainable development of rural areas.
- Intergenerational integration and cooperation, and a healthier and more active lifestyle.
- Lifelong learning and obtaining practical knowledge for the personal development of residents and development of human resources.

Projects of the LAG:

COVERED MARKET IN SODRAŽICA

Within the scope of the project, a covered market will be a permanent facility in the Municipality of Sodražica, and will contribute to a higher quality of life and foster the development of new activities (revival of the market, enhanced economic and social progress, new job opportunities, etc.), which will contribute to the preservation of cultural and natural heritage, the development of tourism and entrepreneurship, the preservation of customs and traditions, the presentation and sale of crops and products from the wider area of the LAG. A promotional film, and a map with descriptions of natural and cultural heritage will also contribute to the town's recognisability and its potential.

Fund: EAFRD

Status of the project: completed.

RIBNICA POTTERY. YESTERDAY. TODAY. TOMORROW?

The project is in the initial phase of implementation. In the previous programming period, the project contractors realised that pottery making was facing extinction, compelling them to widen the project. By preparing a textbook on pottery and a publication, and holding workshops for young and older people, and pottery for beginners, they will raise awareness of all generations who want to know more about pottery.

Fund: EAFRD

Status of the project: in progress.

NATURE – OUR TEACHER

The project, which is currently ongoing, will include the construction of an outdoor classroom, and a sensory trail to educate and raise residents' awareness of the preservation of nature and landscape, and will teach target groups in the area of the LAG about the forest and all its functions. Additional equipment will enable visitors and users of the trail to experience the forest in an urban environment, and the modernised trail with innovative equipment will also support exercising and the mental development of adolescents.

Fund: EAFRD

Status of the project: in progress.

32 LAG Istre

(Slovenian: LAS Istre)



LAS Istre
Destradijev trg 11
6000 Koper

+ 386 (0)5 90 47 121



Lead partner of the LAG:
**Središče Rotunda, Primorski
družbeni center, Koper, so.p.**



Slovenian Istria and its towns are at the crossroads of cultures which are interlaced with the past of the Roman, medieval and Venetian periods. The beauty of the natural environment will immediately captivate you. The LAG comprises the municipalities of Ankaran, Izola, Koper and Piran. In Koper, you will find the most beautiful Venetian square between Venice and Dubrovnik. Izola is a charming coastal town, named after the island on which it was built. Today, Izola is primarily a tourist centre, but residents are still closely connected with fishing and oil and wine production. Piran, a town built on salt, is an old port with the remains of medieval walls, narrow streets and closely constructed houses, and is one of the most authentic and photogenic towns on the entire coast of the Adriatic Sea. Salt pans are the most valuable Slovenian natural and cultural heritage, where salt and fleur de sel are still produced by old methods. The Ankaran Peninsula is a natural monument, with the only saline meadow in the Mediterranean.

The natural phenomena of the Istrian coast with landscape parks, picturesque villages and hamlets, and diverse cultural heritage define Slovenian Istria as a unique tourist destination for lovers of cycling. The cycling route on the former railway route from Trieste to Poreč is an amazing cycling experience.

For many, this area is a destination, while for others, a starting point. Three large marinas are available to those who love sailing.

The real treasure of Slovenian Istria is its cuisine, whose ingredients, such as salt, fish, olives, wine, persimmon, asparagus and truffles, are part of its history.

A view of the sea and culinary treats of the wine-growing region known as the “Land of Refošk”, this is a region you must visit.

*Funded by: EAFRD, EMFF and ERDF
Leading fund: EMFF*

Objectives of the LDS:

- New jobs.
- Support for operations that create conditions for the creation of new jobs.
- To promote the networking of stakeholders and partners, including social entrepreneurship.
- To improve entrepreneurial knowledge and skills.
- To preserve existing jobs.

- New companies.
- To maintain and modernise infrastructure for sustainable development.
- To create new services, programmes, products and short supply chains (social entrepreneurship).
- To establish new forms of mutual cooperation and connections (social entrepreneurship).
- To revitalise natural and cultural heritage as the basis of sustainable tourism development.
- To preserve nature and biodiversity and mitigate climate change.
- To prepare contents and programmes presenting heritage to various target groups.
- To increase the number of organic farms and enhance the effects of organic farming.
- To raise awareness and environmental responsibility.
- To include endangered groups of the population and foster social connections between all population groups (social entrepreneurship).
- To strengthen integral solutions for social and intergenerational inclusion.
- To encourage young people to actively participate in society and (social) entrepreneurship.

Projects of the LAG::

RECOVERY OF LOST OR ABANDONED FISHING GEAR IN THE SLOVENIAN SEA

The purpose of the project is to preserve the natural environment and enhance the biodiversity of the marine environment in Slovenia. The sustainable development of fishing is hindered by abandoned fishing gear, which will be removed within the scope of the project, resulting in economic and general benefits. The primary objective of the project is to identify at least 50 polluted locations, and clean them with the help of divers and vessels to revive biodiversity (at least 5,000 m of nets and 300 kg of metal are expected to be removed). An additional objective is to establish an innovative service of fishing gear removal for sustainable fishing to develop in the area of LAG Istre. The operation also foresees the recycling of fishing gear. Other activities that will be carried out include the imaging of locations, publicity, field inspections, the monitoring of colonisation, and informing target groups of the objectives and benefits of the operation (visits).

Fund: EMFF

Status of the project: in progress.

INTERGENERATIONAL PRESERVATION OF THE SLOVENIAN ISTRIAN DIALECT IN SLOVENIAN ISTRIA

The long-term purpose of the operation is to contribute to the development and re-evaluation of the dialect and cultural heritage in Slovenian Istria, which will indirectly affect the sustainable development of the area and sustainable tourism in rural areas. Within the operation, workshops in primary schools on the dialect (10), lectures in various rural settlements on the local dialect (5) and innovative events/dialect festivals (2) will be carried out, an online portal (1) on the Istrian dialect will be set up, and a book on the Istrian dialect (1) will be published; there will also be a closing event.

Fund: EAFRD

Status of the project: in progress.

PROMOTION OF GREEN AND SOCIAL ENTREPRENEURSHIP, MARKETING CONNECTIONS BETWEEN LOCAL ORGANIC PRODUCERS AND OF SUSTAINABLE LOCAL SELF-SUFFICIENCY

The project is divided into three thematic sets, which constitute a comprehensive operation: 1. Support environment for green and social entrepreneurship. 2. Start-up and operation of an eco-social company (society), the development of short sales chains and a new green job. 3. Promotion of sustainable local self-sufficiency. The operation establishes support environment mechanisms to promote green and social entrepreneurship, with an emphasis on support for the launch of new and innovative ideas or companies (initiatives), and the strengthening of existing operating companies. For this purpose, various activities will be carried out, such as a competition, mentorship, etc. Various activities (advocacy, identification of local policies, proposals for changes needed) will also be realised to establish permanent support mechanisms in the area. Conditions for the start-up and operation of the local eco-social company "Cooperative of Organic Producers of Istria" will be provided, and new short chains for the sale of local organic food products (public, hospitality and tourism sectors) will be developed, including the development of two innovative approaches and services in the area of this LAG – a "mobile organic market" and "organic catering". At the same time, a support service for local organic producers will be developed in the form of providing logistics and distribution for local organic food products.

Fund: ERDF

Status of the project: in progress.



33 LAG Barje with hinterland

(Slovenian: LAS Barje z zaledjem)



LAS Barje z zaledjem
Na Grivi 5
1358 Log pri Brezovici

+ 386 (0)31 366 815



Lead partner of the LAG:
**CERPOK Center za razvoj
podeželja in kmetijstva Preserje**



LAG Barje with hinterland comprises the municipalities of Borovnica, Brezovica, Dobrova, Horjul, Log-Dragomer and Vrhnika, and is one of the most attractive areas in Slovenia. It is characterised by a superb cultural landscape with numerous valuable natural features, and rich cultural and historical heritage.

Some interesting tourist spots:

The Pekel Gorge is a gorge near Borovnica through which runs the Borovniščica Stream. You can climb to the top of the gorge – the steep and stony Hudičev zob (650 m) – on a protected path. On the way through the picturesque gorge, enjoy the overhanging walls, hollows and deep pools, and all five well-known waterfalls, which freeze in the winter and become a popular destination for ice climbers.

Rakitna – located in the midst of the Krim forests. It is known for its favourable climate for people with lung diseases, and harsh but sunny winters. You can swim in Lake Rakitna in the summer, fish in it in the summer and autumn, and ice skate on it in the winter. A circular walking trail starts by the lake, and so does the forest and archaeological educational trail leading to the remains of a Roman defence tower and a barrier wall from the 3rd century AD. In the winter, Rakitna hosts numerous cross-country skiing trails.

The Polhov Gradec Mansion, which dates back to the 13th and 14th centuries when a tower court was located here. In 2008, the Museum of Post and Telecommunications was established in the Mansion. The Mansion hosts unforgettable weddings in the wedding hall or the pavilion in the park. Visitors can indulge in tea with Count Blagaj, read book in the Library Under the Tree Tops in the summer or attend another cultural event.

The Rožman Zoo in Vrzdenc near Horjul is a place which used to be a haven for injured, sick and orphaned animals. Now, it is a private zoo, home to over 50 native and non-native animals.

The climbing wall in the Log Sports Park for boulder climbing, with over 2,000 holds of various shapes and colours, which support climbing routes of various difficulties. In recent years, Log has hosted national championships and international competitions in boulder climbing, which have been attended by the best climbers in the world.

Planina nad Vrhniko – on the edge of the Ljubljana Marshes, there is the forest-covered Planina Hill (733 m) with a new hut and a panoramic tower (22 m high). From the

tower top, there is an amazing view of near and distant surroundings (if the weather is good, you can see all the way to Mt. Triglav).

Funded by: EAFRD and ERDF

Leading fund: EAFRD

Objectives of the LDS:

- To promote entrepreneurial ideas that include internal resources for the creation of new jobs.
- To raise the quality of life.
- To preserve nature and the cultural landscape.
- To reduce environmental pollution and preserve natural resources.
- To enhance the social capital of the area and social integration among residents.

Projects of the LAG:

ESTABLISHING A SCHOOL ORGANIC GARDEN

Teaching children about organic production, locally produced food and of the significance of self-sufficiency contributes to the significance of local, naturally produced food and fosters a higher income for local residents. The project is innovative, as it creates conditions for experiential learning. Children have planted plants, and watched them grow and develop.

Fund: EAFRD

Status of the project: completed.

BLAGAJ TRAIL – NATURAL HERITAGE

The establishment of the thematic trail contributes to the preservation of heritage in rural areas, and fosters connections between cultural heritage, valuable natural features and the cultural landscape, and tourism development and use of leisure

time. In addition, it improves the quality of life in rural areas and indirectly affects their economic vitality.

Fund: EAFRD

Status of the project: completed.

SELLING TREATS FROM OUR FARMS

‘Selling Treats from Our Farms’ is the follow-up to a project started by the Municipality of Dobrova-Polhov Gradec in 2005 by providing space for marketing products from farms in Vič in Ljubljana, where farms may sell their products once a week. In addition to farms from the Municipality of Dobrova-Polhov Gradec, farms from most other municipalities in the area of this LAG may also sell there.

Recently, demand has also been growing for meat, and meat, dairy and bakery products, which requires suitable registration and additional knowledge.

The project includes workshops and lectures on processing food products of animal origin and milk, bread and pastry baking, and making pasta, and lectures based on good hygienic practice, as well as lectures or presentations on the arrangement of space for various activities, the registration of subsidiary activities and the preparation of a leaflet presenting all the farms that will register subsidiary activities and their products and services.

The project has prompted farms to provide suitable space for processing and register various subsidiary activities. It includes a wide range of different types of training which has been carried out. Some of the funds for the implementation of the project was provided by farms included in the project. The objective is to register subsidiary activities, which will support the higher added value of agricultural products, which will be attained even if not all planner workshops or lectures are carried out.

Fund: EAFRD

Status of the project: completed.



34 LAG Drava

(Slovenian: LAS Drava)



LAS Drava
Trg vstaje 11
2342 Ruše

+386 (0)2 460 50 80



Lead partner of the LAG:
EGIDA, PE LAS DRAVA



LAG Drava comprises the municipalities of Lovrenc na Pohorju, Ruše and Selnica ob Dravi.

It is worth visiting for its countless options to spend a whole day in nature: from short strolls to longer and more demanding hikes; for its cycling routes connected with the Drava Cycling Route (from easier lowland routes on the Apple Trail to more difficult ones across the hills), and for its sights: the Lovrenc Lakes, the highest-lying marsh in Europe; the Šumik Waterfall on Pohorje; Ladejenkovo – a building from the 15th century in Lovrenc na Pohorju; the over one-hundred-year-old fruit drying house Pajštva in Lovrenc na Pohorju; Viltuš Castle in Selnica ob Dravi; the hydroelectric power plant Fala Museum; for its diverse products and services, Lipnik Farm in Lovrenc na Pohorju; Grahor Farm in Črešnjevec ob Dravi; the Vernik Restaurant in Bezena near Ruše; and for other experiences (Ruše Sports Park, Downhill) and events (Ruše Stage Festival).

Funded by: EAFRD and ERDF

Leading fund: ERDF

Objectives of the LDS:

- To create new jobs and increase the number of employees create jobs.
- To establish thematic partnerships (a network to promote entrepreneurship and preparation of local products and services).
- To develop new local products and services.
- To prepare new activities to revive village centres.
- Renovated or new infrastructure for cultural, leisure time and other activities.
- To renovate existing services and establish innovative services in rural areas.
- To establish areas of natural and memorial parks.
- To reduce greenhouse gas emissions and invest in small environmental infrastructure.
- To preserve the state of the natural environment while utilising its advantages for tourism purposes.
- To establish partnerships for work with young and older people.
- To support active ageing measures.
- To develop and establish an active lifestyle.

Projects of the LAG:

THEMATIC CYCLING ROUTE

All cyclists know the Drava Cycling Route. It is an international cycling route running from the spring of the Drava River in Italy, on well-maintained cycling routes along the Drava River and across Carinthia in Austria. It enters Slovenia near Dravograd, then runs on local roads with less traffic along the Drava River to the Croatian border and beyond. Part of the route runs through Selnica ob Dravi, where it meets the existing local thematic Apple Trail. LAG Drava connected the local thematic Apple Trail with the Drava Cycling Route on a browfield area along the Drava River. As a result, the local thematic Apple Trail integrated into the Drava Cycling Route which is used daily by numerous cyclists.

Fund: ERDF

Status of the project: in progress.

RUŠE SPORTS PLATFORM

Within the scope of the project 'Establishing a Sports Platform and Recognisability of the Municipality' LAG Drava improved and completed sports and recreational areas in the area of Zadravje, which is becoming an increasingly recognisable sports and recreational destination.

Along with existing sports and recreational areas in Zadravje: Ruše Sports Park (inline hockey, pump track, skate park, combined court/pitch for basketball/football/handball, sports and recreational equipment for children, indoor swimming pool, bowling alley), a football pitch, an outdoor gym, a tennis court and sports hall, a place for so-called street workouts was provided, and vessels (kayaks and canoes) for boating on the Drava River were purchased.

In Ruše, a street workout was set up in the forest by the health-care centre near an outdoor gym and football pitch. Street workout means exercising with own weight in nature, and can be done by anyone, regardless of age, and according to one's own abilities. The use of exercise equipment is free and does not require any special equipment.

The Drava River as a perfect natural ambiance for boating was not utilised in the area of this LAG. Therefore, the LAG provided 18 vessels (kayaks, canoes), which enable

all interested people to spend their leisure time by engaging sports and recreational activities.

Fund: ERDF

Status of the project: in progress.

CLIMBING WALL IN LOVRENC NA POHORJU

By implementing the 'Climbing Wall' project, the LAG enabled the construction of a climbing wall in a multi-purpose sports hall next to the Lovrenc na Pohorju Primary School. This is the first sports climbing facility in the area of LAG Drava. Climbers have approximately 110 m² of climbing surface with routes of various difficulties. The climbing wall is intended for people who have been climbing for some time, beginners who are learning to climb from scratch and other athletes to expand the types of exercise they engage in.

Fund: EAFRD

Status of the project: completed.

35 LAG The Capital and countryside – hand in hand

(Slovenian: LAS Sožitje med mestom in podeželjem)



LAS Sožitje med mestom in podeželjem

Šmartinska cesta 134 a
1000 Ljubljana

+ 386 (0)1 544 54 46



Lead partner of the LAG:
CIZA – Zavod za razvoj podeželja



The area of the LAG is located in Central Slovenia with the capital, Ljubljana, at its centre. It also includes the municipalities of Grosuplje, Ig and Škofljica. The area is marked by a mix of urban and rural character. On the one hand, urban development has fostered the economic development of the area and good development of entrepreneurship and employment, but also reduced the significance of rural areas, which constitute increasingly important development capital of this LAG.

A special and unique feature of the area is the so-called fluviokarst, imperfect karst which denotes atypical karst formed by surface water with erosion and denudation.

Individual parts of the rural natural environment near urban areas, particularly around Ljubljana, have become hiking and recreational spots (Janče, Iški Vintgar Gorge, Orle, etc.). An additional interesting feature is the high number of small karst caves, among which Županova jama (Mayor's Cave) is the most known.

The area is also home to two protected areas of national importance, i.e. Ljubljana Marshes and Radensko polje Landscape Park.

Funded by: EAFRD and ERDF

Leading fund: EAFRD

Objectives of the LDS:

- To obtain specific knowledge and skills to advance qualifications and personal competences to improve employability.
- To promote and facilitate the realisation of new business opportunities.
- To foster the development of local public infrastructure.
- To provide conditions for sustainable tourism, and a healthy and active environment by utilising local potential.
- Active nature protection, sustainable use of agricultural and forest areas, and the preservation of biodiversity in rural areas (supported by EAFRD).
- To promote nature-friendly, and an environmentally and energetically responsible life in urban areas.
- To provide a wide network of services to reduce the social exclusion of residents.
- To promote intersectoral and intergenerational integration to facilitate healthy development for children and provide conditions for the active and high-quality participation of older people in society.

Projects of the LAG:

BRANCH SCHOOL – DRIVING FORCE FOR DEVELOPMENT

This is the only partnership project which brought together ten branch schools in the entire area of this LAG, and was implemented throughout the programming period 2007–2013 with the support of LEADER funds. In this period, over 1,000 children were included in this project, and indirectly, twice as many parents, grandparents and other residents.

By selecting suitable activities, children made direct personal contact with the beauty and diversity of nature, and achieved that, and through informal forms of learning and games in particular they learned about the significance and advantages of rural areas, and cultural, natural and ethnological heritage, raised their ecological awareness, learned how to preserve nature and cultural heritage and to assess options for such preservation, strengthened the identity of rural areas on the doorstep of the capital, and spread knowledge of the significance and methods of environmental protection. By including residents, they created live intergenerational cooperation and brought together all generations not only in their environment, but also across municipal borders.

Fund: EAFRD

Status of the project: completed.

EXPANSION OF THE NATURAL SCIENCE EDUCATIONAL TRAIL “FOLLOWING THE KINGFISHER TRAILS”

The operation includes the modernisation of the existing trail in the area of Log below Cerovo in the Municipality of Grosuplje.

The key objective of expanding the educational trail is to raise awareness and educate people of all ages towards preserving and understanding the significance of biodiversity, and attitude of people to nature. Wet meadows and forests are on the list of sites of Community importance, which we must protect for future generations.

Following expansion, the whole trail “Following the Kingfisher Trails” is now 5.2 km long. It is equipped with signposts and three information boards with a panoramic map of the area. A new and special feature is information boards with a panoramic map made in such a way that enables visitors to use an online, phone or tablet ap-

plication to see the whole trail in a modern, interactive way. Folded panoramic maps of the trail “Following the Kingfisher Trails” also include the possibility of using an online application. On the trail, visitors may stop at 22 boards with educational content. A special feature of the trail is two boards that, in addition to photos and brief description of birds that live in the area, which enable visitors to listen to the sounds of individual birds.

Within the operation, the whole trail, including information boards, was established.

Fund: EAFRD

Status of the project: in progress.



36 LAG Karst and Brkini

(Slovenian: LAS Krasa in Brkinov)



LAS Krasa in Brkinov
Partizanska cesta 4
6210 Sežana

+ 386 (0)5 73 44 362



Lead partner of the LAG:
**Območna razvojna agencija
Krasa in Brkinov**



[TABLE OF CONTENTS >](#)

[MAP >](#)

LAG Karst and Brkini comprises the areas of four municipalities in Karst and Brkini: Divača, Hrpelje-Kozina, Komen and Sežana. The area boasts extraordinary natural and cultural heritage, and rich flora and fauna. It also includes the Karst, a limestone plateau, and Brkini – flysch hills. Wine-growing, the fruit industry (apples, plums, cherries, etc.), the breeding of sheep and goats and cattle, and the production of specific high-quality farm products, such as Teran ptp (recognised traditional denomination), Karst prosciutto and other cured meat products, sheep and goat cheese and other dairy products, Karst honey, Brkini Slivovitz and Karst gin, are well developed in this area.

A mix of specific natural phenomena, and characteristic karst architecture and landscape are an excellent basis for creating unique and diverse tourist products and services. Three large tourist centres (Lipica Stud Farm, Škocjan Caves Regional Park and Štanjel) have been established in the area, which also features numerous hiking trails and cycling routes, wine and fruit roads, numerous caves (Škocjan Caves, Divača Cave, Vilenica Cave, Dimnice Cave, Grof's Cave, etc.), museums (military museum in Lokev, Museum of Slovenian Film Actors in Divača, etc.), galleries, equestrian tourism, etc. Gastronomic tourism is also well developed; we can find numerous restaurants, pizza restaurants, tourist farms and osmica wineries, all attempting to provide visitors with typical karst cuisine.

Funded by: EAFRD and ERDF

Leading fund: EAFRD

Objectives of the LDS:

- To promote the use of local products and services.
- To raise added value and the volume of crops, products and services.
- To promote connections between local actors.
- To promote innovative entrepreneurship and social entrepreneurship development.
- To ensure the requisite small infrastructure.
- To improve conditions to facilitate a high quality of life.
- To preserve existing natural resources and raise awareness of the significance of nature and environmental protection.
- Sustainable farming, to promote local self-sufficiency, and preserve and protect rural areas.
- Sustainable mobility.
- To foster intergenerational connection.
- To enhance social integration and the social inclusion of all population groups.

Projects of the LAG:

FOLLOW US ON FAIRY TALE TRAILS AROUND THE KARST AND BRKINI

Within the operation, four brochures were issued to promote the area of the Karst and Brkini, and include descriptions of their special features and characteristics (culinary treats, crops, products, natural and cultural heritage, caves and footpaths in the Karst and Brkini); they were also issued in Italian and English. The characteristics of the Karst and Brkini were also presented at two domestic and two foreign fairs, and various promotional and tasting events around the Karst and Brkini.

Fund: EAFRD

Status of the project: completed.

HOLIDAYS IN THE COUNTRYSIDE

The operation showed children the positive sides of spending leisure time on a farm. During activities carried out within the operation, children learned about domestic animals, waste separation and the use of biogenic waste for fertilisation, meadow and medicinal plants and their use in cosmetics, certain beekeeping chores, and how to make beehive panels and wax candles; they participated in art workshops, walks in nature and camping.

Fund: EAFRD

Status of the project: completed.

RENOVATION OF EXISTING TRAILS IN THE DIVAČA CAVE

Within the operation, trails in a certain section of the cave will be renovated. The trail has been cleared, support walls have been reinforced, electrification and plumbing were carried out, steps have been renovated and the path has been paved. Photos taken during the work in the cave were published in a book and presented at an exhibition.

Fund: EAFRD

Status of the project: completed.



LAS Vipavska dolina
LOKALNA AKCIJSKA SKUPINA

37 LAG Vipava Valley

(Slovenian: LAS Vipavska dolina)



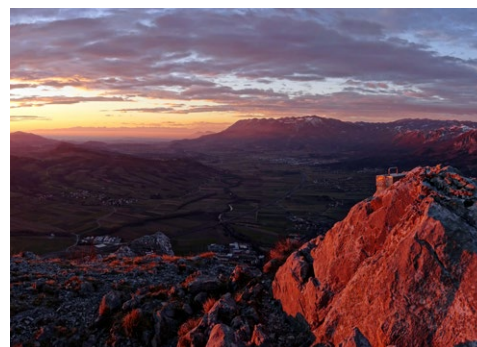
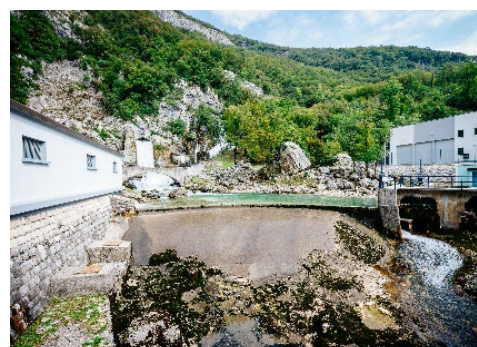
📍 LAS Vipavska dolina

Vipavska cesta 4
5270 Ajdovščina

☎ +386 (0)5 365 36 00



🤝 Lead partner of the LAG:
Razvojna agencija ROD Ajdovščina



Partnership LAG Vipava Valley, which currently has 92 members, operates in the area of the Upper Vipava Valley, which is administratively divided between the municipalities of Ajdovščina and Vipava. It comprises two natural geographical areas: the Vipava Hills and the bottom of the Vipava Valley, which is surrounded by the Trnovo Forest and Nanos karst plateaus to the north.

The area of this LAG, with 24,710 residents, is mainly rural. The strong farming tradition is an important economic activity in the valley and significantly contributes to the characteristic cultural landscape, which is also attractive to visitors. A special mark in the valley was left by the Romans who brought its agricultural wealth, the vine. The valley boasts several indigenous grape and wine varieties. The valley and the surrounding hills are also home to many cherry, peach, apricot and persimmon orchards.

Ajdovščina has become a modern urban centre on the foundations of a Roman castrum by the torrential Hubelj Stream, which still features Roman towers and a medieval settlement with narrow streets. Vipava is a place of numerous springs of the namesake river, which is also known as “Slovenian Venice” on account of the many bridges in the area and the wonderful water park stretching behind the mighty Lanthieri Mansion.

The development-related atmosphere in the area of LAG Vipava Valley is positive; both local communities have been opening outwards in order to attract potential investors, particularly employers. The development concept of the Vipavska dolina brand, which was designed a few years ago, has yielded first fruits of labour. Increasingly recognised as a tourist destination, the region builds on three interconnected pillars: on the valley's natural and historical features, world-class wine and culinary stories, and sports and adrenaline adventures, allowing visitors to the valley and plateaus to spend their free time in nature all year round. The most encouraging factor, however, is that wider recognition is followed by realised entrepreneurial initiatives in tourism.

Funded by: EAFRD and ERDF

Leading fund: EAFRD

Objectives of the LDS:

- To provide conditions for new jobs.
- To promote the use of local products and services.

- To develop knowledge and synergies in the area.
- To raise the quality and increase the scope of infrastructure for basic services.
- To improve the accessibility of services for local residents in rural areas.
- To facilitate new activities for vulnerable groups.
- To create conditions to empower target vulnerable groups through connections.
- To preserve and improve the environment

Projects of the LAG:

CENTRE FOR THE PROMOTION AND PROCESSING OF AGRICULTURAL PRODUCTS – BRJE EDUCATIONAL CENTRE

The Brje Educational Centre is a common plant for the processing of fruits if they can be turned into several end products: dried fruits, jams, compotes, juices and nectars. Various training events are carried out, and space for the promotion and marketing of products has been set up. It is designed so that the equipment can be technologically upgraded, and technological processes may be modernised and supplemented.

Fund: EAFRD

Status of the project: completed.

BIRDS IN AN AGRICULTURAL CULTURAL LANDSCAPE – TODAY AND NEVER AGAIN?

This is a project that gave meaning to the preservation of birds in the agricultural cultural landscape in the Vipava Valley. Several lectures and workshops on manufacturing nesting boxes and a census of birds (common species in the past – little owl, partridge and hoopoe), individual advisory services for farmers, ornithological trips, publications in local newsletters and an art competition were carried out, and an online guide to birds was prepared.

Fund: EAFRD

Status of the project: completed.

RENOVATION AND COMPLETION OF CLIMBING AREAS IN VIPAVA AND VIPAVSKA BELA

Together with the Vipava Mountaineering Society, the Municipality of Vipava renovated and completed existing access paths and steps to individual sectors of climbing areas in Vipava and Vipavska Bela, put up signposts to individual sectors in the climbing areas, and three large panoramic boards at the climbing area in Vipava and one at the Church of St Nicholas. Within the scope of the project, existing sports climbing routes in climbing areas, which are suitably marked with triangles, were renovated. Space to rest and prepare equipment below the routes was also provided.

Fund: EAFRD

Status of the project: completed.

MUSEUM COLLECTION OF ANALOGUE TRANSMISSION TECHNOLOGY ON NANOS

The museum collection of analogue transmission technology on Nanos was an addition to tourist products on Nanos. This decision was brought on by the discontinuation of radio and television transmission by analogue technology. The museum collection is located near the the Vojko Hut, which is a popular hiking destination. Signposts were put up to improve promotion, and a website was designed in several languages with information on the museum and tourist products and services on the Nanos Plateau. (<http://tic-nanos.si/sl/muzejska-zbirka/>)

Fund: EAFRD

Status of the project: completed.

National Rural Network

The National Rural Network provides important support for the implementation of the Rural Development Programme (RDP) 2014–2020, and is its main communication tool. The National Rural Network informs potential beneficiaries of the possibility of access to RDP 2014–2020 funds, their obligations, etc., and informs the general public of the significance of implementing the RDP 2014–2020 for Slovenian rural development. The network communicates through the website www.program-podezelje.si, weekly PrePlet e-news, printed materials, television and radio shows, various workshops and presentations. Communication is bilateral, which means that it obtains information from individuals and organisations at the local level, and shares it through various communication channels. You are warmly invited to provide information on rural development.

The mission of the National Rural Network is also to promote qualifications, participation and connection. Its activities are aimed at high-quality implementation of the RDP 2014–2020 (e.g. reducing errors of beneficiaries), promoting participation (particularly under Measure 9 Producer groups, Measure 16 Cooperation and Measure 19 LEADER), and connections between various partners and stakeholders in Slovenia and beyond, such as within the European Network for Rural Development. Connections and participation must be strengthened and encouraged. The National Rural Network promotes the transfer of knowledge, innovation, the inclusion of partners, providing information to target groups, etc.

CONTACT:

National Rural Network
Ministry of Agriculture, Forestry and Food
Dunajska 22
1000 Ljubljana
☎ +386 1 478 9128



CLLD/LEADER INFO point



REPUBLIC OF SLOVENIA
**MINISTRY OF AGRICULTURE,
FORESTRY AND FOOD**

Rural Development Division
CLLD Coordination Committee
Dunajska 22
1000 Ljubljana
☎ + 386 (0)1 478 9128





Local action groups in Slovenia

in the programming period 2014–2020

Published by: Ministry of Agriculture, Forestry and Food

English translation: PSD d.o.o. (Laura Cuder Turk)

Designed by: VIKRA, Petra Vidonja s.p.

Photographs taken by: Aleš Zidar, LAG Between Snežnik and Nanos, Zlatko Zevnik, LAG From Pohorje to Bohor, Roman Medved, LAG For city, countryside and you, Municipality of Miklavž na Dravskem polju, Municipality of Starše, Municipality of Hoče-Slivnica, Viktorija Barbič, LAG Meža Valley, Tina Čadež, Tine Škrbec, Matej Povše, LAG Heart of Slovenia, Jernej Golc, LAG Haloze, mag. Janja Jordan, LAG Posavje, Matjaž Jambriško, Peter Domevšček, Uroš Brežan, Tatjana Šalej Faletič, LAG Soča Valley, Borut Dvornik, dr. Marinka Vovk, Municipality of Grad, Društvo za promocijo in zaščito prekmurskih dobrot, KTD Moščanci, David Stupica, LAG Obsotelje and Kozjansko, Municipality of Dobrovnica, Municipality of Kobilje, Municipality of Velika Polana, Municipality of Turnišče, ZTK Beltinci, LAG Good for us, Evgenija Cesar, LAG Mislinja and Drava Valley, Municipality of Ljubno, Deja Golčman, Archives of the Municipality of Velenje, Mirjam Povh, Mladinski center Šmartno ob Paki, ICRA d.o.o. Idrija, Božo Uršič, Zavod ARS VIVA, RRA Zeleni kras, Tur Servis, BSC Kranj, Archives of the LAG Ovtar Slovenskih goric, LAG Zasavje Partnership, Zlatko Zadavec, Doris Pavuna Stanko, TOTI LAG, www.visitmaribor.si, Archives of the RA Savinja, Črtomir Špacapan, LAG Embraced by the Sun, Peter Pribožič, Marina Vrbnjak, Paul Wadkin, LAG Prlekija, Pomurski sejem d.d., RC Kočevje Ribnica d.o.o., Igor Komadina, LAG Istre, Andrej Udovč, LAG Barje with hinterland, LAG Drava, Marjanca Marn, Emilijana Lipovšek, Ester Mihalič, Jure Makovec, Marko Puc, Miran Krapež.

Year of release: 2019

The contents are the responsibility of the ministry of Agriculture, Forestry and Food which is also the management authority tasked the implementation of the Rural Development programme of the Republic of Slovenia 2014–2020. Publication co-financed by: European Union, European Agricultural Fund for Rural Development, and the Republic of Slovenia.

Kataložni zapis o publikaciji (CIP) pripravili v Narodni in univerzitetni knjižnici v Ljubljani

COBISS.SI-ID=299899648

ISBN 978-961-6761-70-3 (pdf)

